



# NEWSLETTER

Volume IV

No. 1

February 1986

---

---

## President's Letter

Well, we sure started off 1986 with a BANG! With standing room only we had the best turnout of regular members and visitors that we have had in quite a while. I hope this is a good indication of what's ahead.

As usual, the election of officers did not take long. With the exception of Walter Barnett being elected as Treasurer and Frank Jones as 2nd Vice President, everyone else was re-elected. You will find a list of your 1986 officers further on in this newsletter.

I would like to see 1986 become our biggest and best year yet. All it takes is a little effort on everyone's part. Make a special effort to bring a friend and don't be afraid or reluctant to take an active part. There is plenty of room for everyone to jump in and go.

We have some Saturday workshops planned for you this year that we hope will prove helpful. We tentatively have one scheduled for the latter part of this month. We will have more information at our next meeting.

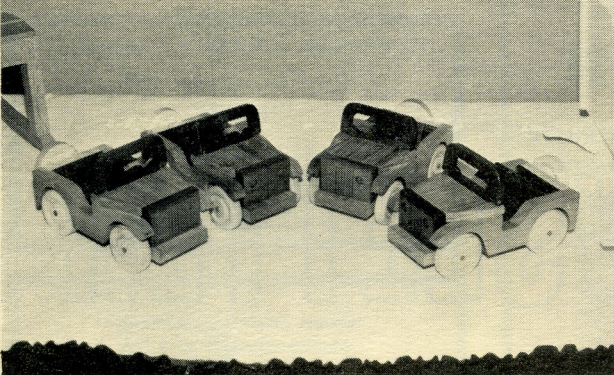
Ronnie Acton and Frank Jones are in charge of our program this year but have asked for your help. They would like some ideas for program topics and also which of you are willing to give a program. It's real easy. You just stand up in front of your friends and tell them the way you do something. Once you start the ball rolling, it's all down hill. No one has been booed out yet.

So, in an effort to get the ball rolling and get everyone's feet wet, we have designated this February as Jig Month. It's real simple. Everyone bring his or her favorite jig (everybody has one) and give a short presentation as to its use. Since we will be having many demonstrations, please try to make it short — 5-7 minutes.

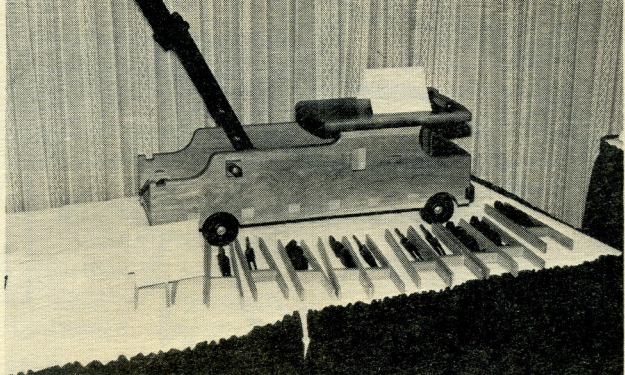
Coy Ellis has asked that when you come in to please sign the register and get your name tag.

See you in February,  
Spruce McRee

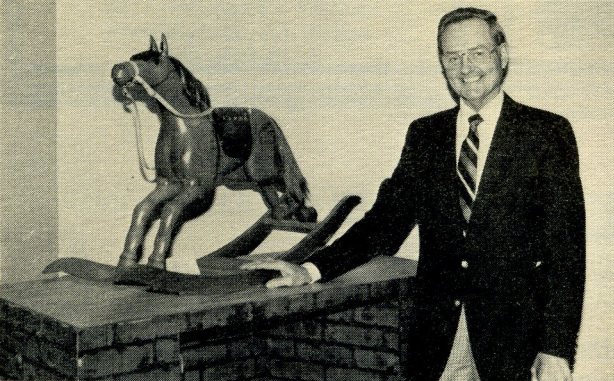
P.S. So far we have 72 paid members for 1986. We also have 53 members from last year who have not renewed their membership.



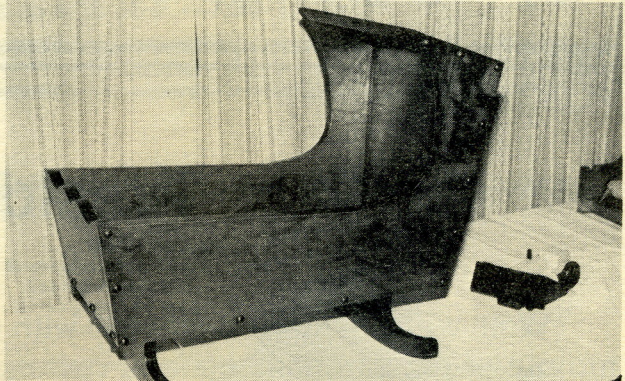
Wooden Jeeps by Gene Boley



Firetruck by Frank Jones made from cherry, walnut and persimmon.



This year's Toys for Tots winner Ed Ramsey proudly displays his hand carved solid cherry rocking horse (with real hair and leather saddle). Congratulations on a job very well done.



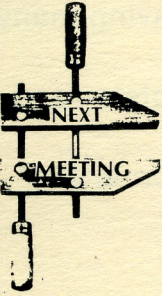
Cherry cradle by Walter Barnett



Ed Landrum, proud winner of a new finishing sander at our Toys for Tots party.

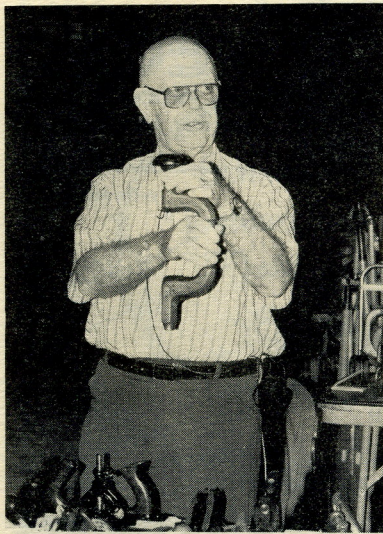


Ivan Kronberg displays his miniature Windsor chair and table at our November meeting.



## NEXT MEETING:

**When:** Thursday, February 13 — 7:30 p.m.  
**Where:** Acton Moulding in Helena  
**Subject:** Bring your favorite Jig



Mr. Fred Curry drove all the way from Atlanta to bring his outstanding collection of antique tools. Thanks, Fred, for a most enjoyable meeting!


**hardware supply**  
WHOLESALE DISTRIBUTORS

**COMPLETE CABINET HARDWARE SUPPLY**

• ABRASIVES • CABINET HARDWARE •  
 DECORATIVE WOOD MOULDINGS • APPLIANCES  
 • COMMERCIAL HARDWARE • GLUES • NEVAMAR  
 LAMINATED PLASTICS • LOCKS

  
 3912 SECOND AVENUE SOUTH, BIRMINGHAM, AL 35222  
 TELEPHONE 205-595-4655

## CHISELER'S CORNER

**For Sale:**

Sears 6" Jointer — very good condition. Call James Smith 877-7594.

Sears 6" Jointer — like new, \$250.00. Call 823-3666.



### AWG Officers for 1986

President .....	Spruce A. McRee — 663-9453
1st Vice President .....	Ronnie Acton — 663-0130
2nd Vice President .....	Frank Jones — 663-9057
Secretary .....	Kerry McCalla — 991-0413
Treasurer .....	Walter Barnett — 823-5951
Membership Chairman .....	Coy Ellis — 833-5101

### CHISELER'S CORNER

Are you having a problem trying to buy, sell or trade something? Do you want help on a specific project? Having difficulty tryint to locate a rare tool or supply?

Place an ad in our Chiseler's Corner column next month. Mail this form 2 weeks prior to the next meeting and your ad will be printed.

Want to  buy  sell  locate  swap

Describe item \_\_\_\_\_

\_\_\_\_\_

\_\_\_\_\_

\_\_\_\_\_

\_\_\_\_\_

\_\_\_\_\_

Cost: \_\_\_\_\_

Your name & phone number: \_\_\_\_\_

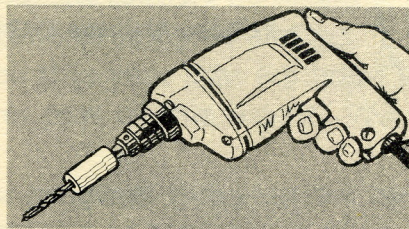
\_\_\_\_\_

\_\_\_\_\_

Mail to: The Alabama Woodworkers Guild  
 P.O. Box 327  
 Pelham, Alabama 35124

## SHOP TIPS

### Depth-of-hole Control



*Without a drill press, accurate control of hole depth with a hand-held electric drill is difficult at best. TIP: Drill a hole in a short length of dowel that's large enough in diameter that it won't split and fits snug on the bit. To adjust for depth of hole, vary the dowel's length and the placement of the bit in the chuck. You can make several of these for a variety of depths to keep on hand, or toss it when finished.*

### SATURDAY WORK CLINIC

**When:** To be announced at February meeting.  
**Subject:** Stained Glass taught by James Smith.  
**Where:** Acton Moulding  
 (For more information call James Smith)  
 (877-7594 Work — 987-0077 Home)

**ALABAMA LUMBER & SUPPLY CO.**

4204 1st Avenue South  
592-6331

*Soft & Hardwood Lumber  
Builders & Cabinet Hardware*  
**Ray & Ralph Zorn**

*Specialty Brass items  
for the Woodworker*

**BRANDINO'S** Brass Co.

101 Loehmann's Village  
Birmingham, AL 35244  
(205) 988-3918

INJECTA  
**INCA**  
Wood  
Working Machines

**HEGNER**  
Scroll Saws  
*Makita*  
**POWER TOOLS**

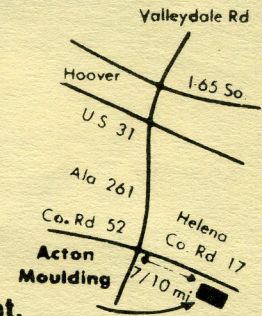
**VEGA**  
Wood  
Working Machines

Record  
Marples  
Watco Stain  
Minwax  
Books  
DML  
Saw Blades  
Router Bits

**Mouldings**  
Stair Parts  
Hardwood Lumber  
Cabinet Plywood  
Hardware — Handtools

**Acton**  
Moulding & Supply

6 to 4:30 M-F.—7:30-12 Sat.



County Road 17

Helena, Al.

205-663-0130

THIS NEWSLETTER PRINTED BY SOUTHERN BUSINESS PRINTING, PELHAM, AL 35124 — 663-0936

MOBILE BRANCH:  
Coastal Saw & Machinery  
901-D Butler Dr.  
Mobile, AL 36609  
(Local) 666-1180

MAIN OFFICE  
Birmingham Saw Works  
910 North 28th Street  
Birmingham, AL 35203  
(Local) 252-9737  
Ala. WATTS 1-800-292-4032



# BIRMINGHAM SAW WORKS

The Alabama Woodworkers Guild  
P.O. Box 327  
Pelham, Alabama 35124

