



NEWSLETTER

VOLUME V NO. 9 SEPTEMBER 1987

OFFICERS

Leonard Sanders President
 Ron Acton 1st Vice President
 Frank Jones 2nd Vice President
 Anita Skocik Newsletter Editor

Walter Barnett Treasurer
 Kerry McCalla Secretary
 Ivan Kronberg Board of Director
 Dale Lewis Board of Director

PRESIDENT'S LETTER...

Man, what a program! You may rest assured you missed a thoroughly fascinating program if you weren't there on Aug. 13th. The VISADOR CO. sent their chief of Research and Development and their regional salesman who together, made us novices realize building stairs is no cinch. We had builders visiting who learned much also.

Speaking of learning--that's what our guild is all about. We strive to have programs designed to teach or instruct. No lectures, but demonstrations we can learn from and take home and use.

I was thrilled with the response to the two clip boards circulated at the last meeting. We had 16 members sign up to enter something in the SHOW (9/24, 25, 26). There are several of you who were not present who will want to make an entry, so keep working on it and have it ready to bring as soon as we set the hour (probably around 9:00 A.M. on Thursday, 9/24/87.) I was also pleased

with the other clipboard which outlined the hours we need members (at least, two) attending the show pieces, (in a sense, baby sitting them). Naturally, we want to take every precaution to protect our entries---and we will. By the way, from the list of pieces you gave me, we will have a fine variety of items and skills on display. This show should bring us a host of new members---men and women like you and me, people who love the feel and smell of wood, and people who want to learn more about working and finishing wood.

Following up on my pitch about Toys for Tots, don't let the time slip up on you. December will be here before you know it. Nelson Brooks is working hard to find the best place to hold our auction and we are suggesting that if you would prefer to make jewelry boxes, candle sticks or other small gift-type items, please do so keeping in mind their saleability or auctionability.

The Show and Tell isn't being participated in quite as strongly as I had hoped. It is usually the same ones

who are bringing their pieces---and they are much appreciated--but I wish more you you would bring yours.

So much for this tune. As mentioned elsewhere in the newsletter, our next program is on FINISHING. I look forward to greeting all of you on Sept. 10th, (the last meeting before the SHOW).

Leonard

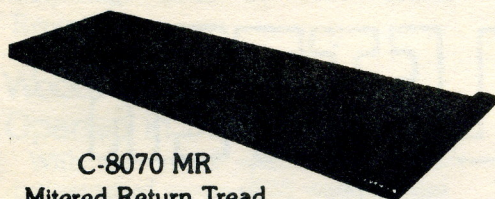
MEMBERSHIP...

Coy Ellis is our membership chairman. Anyone desiring information about our guild, and/or registration forms may call him at 833-5101 or write to him at 429 East Ventura Drive Birmingham, AL 35235.

If you wish to send in your dues, Walter Barnett is treasurer, and can be reached at 823-5951 or 3409 Hanford Lane, Birmingham, AL 35226.

Our Red Oak Treads and Risers are manufactured under

highly controlled standards for beauty that lasts a lifetime.



C-8070 MR

**Mitered Return Tread
1½" x 10½" and 11½"**



Up Easing

**4¼" Center
of Rail to Center
of Newel Cap**



**C-7030
Left-Hand Volute**

NOTES OF OUR LAST MEETING...

As Ron Acton was about to introduce our guest speakers/demonstrators for the evening, one could feel an air of anticipation in the 50 or so members/guests present, amongst which were some of Ron's customers, and stair builders/installers.

The VISADOR CO. is in Marion, Va., is over 100 years old, and was started by J. D. Hall, Jr. Coffman started in Ohio and later merged with Visador. When you've been around for that length of time, specializing in stair parts and millwork, you can expect quality and fine workmanship. That's what you get from Visador, as attested by Ron Acton, who is #1 in stair sales in the district covering Alabama, Mississippi, and Louisiana.

Joe Hampton is Research and Development Manager with the company, and Greg Palmer is the sales representative for Ron's district. As these men stepped forward beside a display model, one could see that they were proud of their product.

As Joel pointed out, in the olden days, houses were originally designed around the stairway, but now stairs are built to accommodate the design of the house.

Coffman can furnish your stair parts in most of six different profiles: Hampton, Traditional, Classic, Wellington, Regency, and Centurion. They're available in Beech, Poplar, and Oak.

For those of you who have always dreamed of a showplace staircase, the largest distributor of curved stairways also makes and sends to the job site prenumbered and ready to put together stairways. How much easier can they make it?

Listening to Joel, you appreciate his being in R&D as he simplifies the measuring, cuts, and installing. First, we were handed out a rise/run scale that also explained how to figure out how many risers will be needed. This is useful to know whether you're building stairs out of pine or out of expensive material.

Code states no more than 3/16th difference in rise, so they really build to specification, and precision.

Often times we just don't know where to start measuring for the first baluster. The face of the baluster should be in line with the face of the tread. You take the amount of nosing plus ½ the thickness of the baluster and you have the marking of your first baluster.

Another area of measure that is often overlooked when rough framing for stairs is to allow for the nosing overhang. If you're building 48 inch stairs, you have to allow 1½ in for overhang, making your R.O. 46½ in.

In his strive to make installations easier and faster, and therefore more economical, Joel has developed various jigs that the company sells at cost. When you're cutting a part that

may cost \$100-\$150, you do not want to make too many mistakes.

He also showed how the use of a pitch block, (a triangular block which will be cut on the rise, and run and will have the longitudinal part as the pitch), can be most helpful, as well as a precision drill guide used for drilling angled holes in the rail.

When joining parts together (rail parts), the use of rail bolts or clamp nails were shown.

As we progressed from the stringers to the treads and risers, and the measuring for the balusters, and the fillings, (volute and risers, and rail), Joel made it look so simple, that no doubt at least ¾ of those present felt confident that they could install a set of Visador/Coffman stairs without TOO much difficulty.

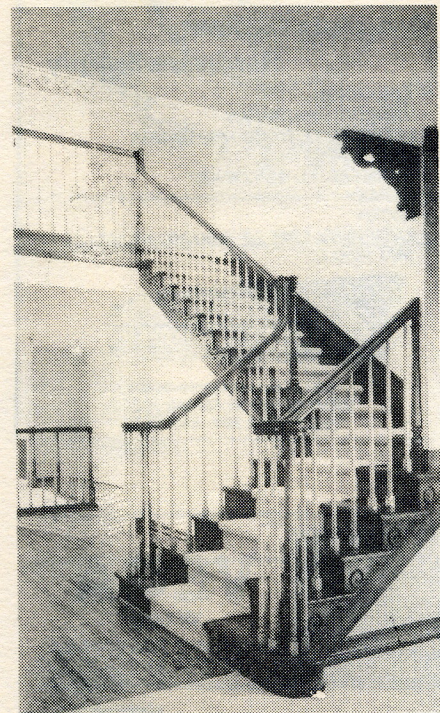
I seem to have overlooked Greg in my forementioned, but I will interject at this time that he was Joel's right hand man in putting the display together as Joel was talking and Greg would also point out availabilities of items and other points of interest to the builders and installers which in turn was often times of interest to all.

They make a very strong team and presented a very informative and professional demonstration of their company's products.

Thanks ever so much, Joel and Greg. You gave a superb meeting of the minds. Come again any time.

BALUSTERS

- 31" - first Baluster on each Tread.
- 34" - second Baluster on each Tread.
- 36" - third Baluster on each Tread when three are used - also used under Volutes.
- 39" - used under Turnouts.
- 41" - used on landings and balconies where code requires
- 42" rail height.



SHOW AND TELL

Once again members displayed works of labors of love. Although the number of items was limited, there is no doubt about the quality.

Dale Lewis' beautiful bowls are a constant reminder of his dedication and strive for new and unique pieces. This was evident in his new bowl called, "Bowl-Weavil".

Ivan Kronberg brought his latest carving. Although Ivan will tell you he's not much of a painter, he really does great in getting the right look on his little old men's faces, and his color schemes are just beautiful. He also knows just when to add that bit of "comical look" when applicable.

Leonard Sanders exhibited an Early American end table for a chair. Another outstanding piece made of mahogany. He also had a half moon band saw jewelry box duplicated from a Fine Woodworking magazine. Leonard is surely a well rounded artisan whereas he is at home on any piece of machinery, be it lathe, band saw, shaper, or otherwise.

IN THE GOOD OLE DAYS...

In line with the stair building presentation of the evening, Kerry McCalla brought in an assortment of 18th and 19th century stair routers and also had a stairmaker's saw that cut specific depths. "D" routers were called such because they were shaped like the letter "D". Germany was somewhat of a forerunner in routers. One of Kerry's routers had a bird's eye maple wear base. Of interest also was a shave that was used specifically to design the finger grip on the hand rail.

Observing the progress made in tools throughout history makes you appreciate what one has today, but at times one just wants to get closer to the wood and still enjoys falling back to a manual tool that allows you to do the work and appreciate the fruit of your labors more.

Nothing beats the personal touch!
Thank You, Kerry

ALABAMA LUMBER & SUPPLY CO.

4204 1st Avenue, South
592-6331

*Hardwood Lumber & Playwood
Builders & Cabinet Hardware*
Ray & Ralph Zorn

DOOR PRIZE WINNER...

The lucky person of the evening who won a Norton sharpening stone was J. Y. Cooper. He's always been a rather sharp fellow, but has no excuse not to be "extra sharp" from now on.

FIRST, IN PRINT, NOW TV...

Thanks to Spruce McCree III, who is now in video making, the AWG will be featured on Shelby Cable TV promoting our September show at Hoover Mall. Viewing dates have not been announced as yet, but it will be close to our show time.

Channel 6 will also film Leonard Sanders at work on his lathe in his workshop, and this segment will be featured on the Tom York Show.

Another avenue will be The Shoppers Guide, which many of us receive for free.

Needless to say, that with all this free publicity the AWG members have a lot to live up to and no doubt will make a fine showing next month.

If there are any doubts, our show will not be a sales show, but a showing show. If anyone desires a duplicate of what will be shown, they will be put in contact with the respective craftsman, if he/she is interested in taking orders. So, don't hesitate to show your crafts. **WE NEED EVERYONE TO PARTICIPATE.**

STILL LOOKING TO BUY...

A heavy duty wood lathe. Please sell me your old heavy duty lathe that's just collecting dust in your shop or taking up space in your garage. Maybe you have a friend or know of someone who is not using his lathe. You have here an eager beaver who is most eager to get to work.

Call me anytime. If I'm not home, my answering machine will be glad to take the call.

Joseph Bailey--226-4982

**BECOME AN ACTIVE
MEMBER OF YOUR GUILD**

ATTENTION WOOD TURNERS...

The following is a reprint from the July-Aug. issue of "The Crafts Report".

Wood Turning Center Is Opened in Philadelphia

With the initial sponsorship of a distinguished group of 33 woodturners and woodturning enthusiasts, The Wood Turning Center has been established in Philadelphia as a non-profit institution whose objectives are education, preservation, and promotion of wood turning.

Executive Director Albert LeCoff, a noted wood turner, explained that the Center "will document the historical development of national and international turning, and will house an outstanding collection of turned objects." LeCoff himself donated his collection of over 100 turned objects and 3000 slides and documents to establish the Center's archives and museum. The first formal exhibition sponsored by the Center will be held in July in St. Louis in conjunction with the Craft Alliance.

An appeal for members and supporters was signed by curator Jonathan Fairbanks and wood turner Rude Osolnik, along with LeCoff. "Our plans are to develop an ongoing facility to foster and nurture the growth of the woodturning craft," the letter said. "We are seeking to acquire a building which will house the archives, museum, offices, classrooms, and wood turning shop." Membership and a variety of benefits are offered in eight categories, ranging from \$25 to \$5000. Details are available from the Wood Turning Center, PO Box 25706, Philadelphia, PA 19144 (215-844-0151).

NEXT MEETING...

As the main function and goal of the Alabama Woodworkers Guild is to educate, teach, and/or instruct its members, our September meeting will be fulfilling that criteria.

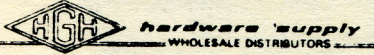
An area that most of us seem to feel a bit weak in is probably in finishing the product. We never know when to use a lacquer, polyurethane, etc..

At this meeting we will be shown the ins and outs by a representative of the DEFT Co., makers of fine finishing products for many years.

Come early and stay late. Bring a friend. We'd love to have you and yours join us.


SEE YOU AT THE NEXT MEETING
THURSDAY 10th
of SEPTEMBER
7 P.M.

ACTON MOULDING SUPPLY



Complete Cabinet Hardware Supply

- ABRASIVES
- CABINET HARDWARE
- DECORATIVE WOOD MOULDINGS
- APPLIANCES
- COMMERCIAL HARDWARE
- GLUES
- LOCKS
- EXTENSIVE LINE OF WOODWORKING MACHINERY

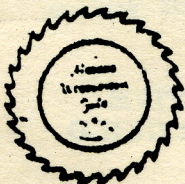


3912 Second Avenue South
BIRMINGHAM, ALABAMA 35222
TELEPHONE 205-595-4655

INJECTA INCA Wood Working Machines	HEGNER Scroll Saws <i>Makita</i> POWER TOOLS	VEGA Wood Working Machines
Record Marples Watco Stain Minwax Books DML Saw Blades Router Bits	Mouldings Stair Parts Hardwood Lumber Cabinet Plywood Hardware — Handtools Acton Moulding & Supply 6 to 4:30 M-F. — 7:30-12 Sat.	
 		
County Road 17 Helena, AL. 205-663-0130		

BIRMINGHAM SAW WORKS

P. O. Box 126 • Birmingham, Alabama 35201
Call Toll Free 1-800-289-SAWS • Mon. - Fri. 7 - 5
Powermatic — Delta — Freud
Easy Access From I-65 and Red Mtn. Xpressway



The Alabama Woodworkers Guild
P. O. Box 506
Helena, AL 35080