



# NEWSLETTER

Vol. V

No. 12

December 1987

## OFFICERS

Leonard Sanders.....President  
Ron Acton.....1st Vice President  
Frank Jones.....2nd Vice President  
Anita Skocik.....Newsletter Editor

Walter Barnett.....Treasurer  
Kerry McCalla.....Secretary  
Ivan Kronberg.....Board of Director  
Dale Lewis.....Board of Director

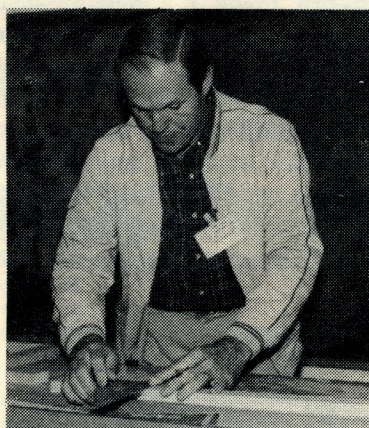
## President's Letter:

The November meeting was the best attended meeting of 1987 - there were 58 members there.

It was encouraging to see the number of hands raised when asked how many were making something for the TOYS FOR TOTS auction. The porch swing made by Bob Graves was just an example of the fine work done by our GUILD members. By the time you get this Newsletter the auction will be over and we should have the results. We will tell you all about it in January.

From where I stand each meeting it is amazing how much knowledge and talent we have in the GUILD. You folks are capable of designing and producing just about anything you want to and some of you do. To you others, who haven't really tackled a challenging project—don't delay any longer. The most it can cost you is a little wood and a little time. So what? You can get some more wood and your time is limitless, and if your first great adventure fails (which I doubt will happen) you are sure to succeed the second time having learned from the first time what not to do. How's that for a sermon?

Now, my friends, and I do feel I have made many fine and lasting friends among you, this is my last epistle to you. I appreciate the encouragement and support of the officers, Board of Directors, and you this year. It has been a memorable experience and one I'll always remember.



## November Meeting

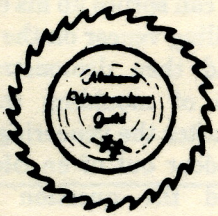
From the size of the crowd it was obvious no one among the membership knows anything about cabinet making. The attention Ronnie got, and the questions asked, were indicative of the really fine job he did with a subject in which he is the expert.

Some were surprised to learn that the rails of the framing should be doweled together, rather than mortise/tenon. Ronnie demonstrated a relatively inexpensive doweling jig which produced (right before our eyes) perfectly fitted rail joints, and joints that would never move. He explained how one can spruce up his old cabinets by installing veneer on the face of the door and then demonstrated three varieties of moulding that can be applied after the veneering — making a **new** door out of an **old** door. He answered the question from Jim Patton about is it possible to remove polyurethane from cabinets in order to paint or stain them a different color — the answer is **no** —it is **almost** impossible to remove polyurethane successfully. Ronnie then displayed a Galley Rail — two rails with about 1" spindles in between - and how the rail can spruce up the appearance of the top of the cabinets if they don't go all the way to the ceiling. If they do reach the ceiling with just plywood enclosing the air space above the cabinets, remove the plywood, slide it back 4-6 inches and

*(continued on page 3...)*

## Antique Tools

Once again, Kerry McCalla gave us a lesson in how our predecessors, forefathers and ancestors weren't so dumb after all. Meeting after meeting Kerry has shown us tools from earlier decades designed and produced without the aid of a computer - something unheard of today. His display of spirit levels was outstanding. There were several which were capable of measuring a grade as was used by railroad construction companies. Naturally, railroad construction had to be concerned with grades. He pointed out it is amazing how the glass over the spirit levels has survived the decades without being broken. Of course, the ancients learned to protect the glass by recessing it (and did so without a computer). Another interesting level was the one that was jointed in the middle so it could be broken down into two pieces for easy storage in their tool box. We hope Kerry never runs out of tools to show us. Even if he has to start over it has been quite a while since his first presentation, and we have probably forgotten the first one. We appreciate your doing this for us, Kerry.



## Ivan's Cedar

Ivan Kronberg, one of our Directors, is our expert on wood. After retiring from U. S. Steel (Now USX), he became the Forrester for Seaman Timber Co. and in that capacity supervised the felling of several cedar trees recently. He loaded about a dozen pieces - about 12-14 inches in diameter and 12-14 inches long - in his truck and brought them to the November meeting and gave them to anyone who wanted them. We very much appreciate that kind of thoughtfulness and encourage others to follow Ivan's lead. Thanks, Ivan.

## Door Prize

Coy Ellis is our Membership Chairman and as such tries very hard to keep an attendance record of our GUILD. In conjunction with getting you all to sing in he administers the Door Prize drawing which is done by Sue Acton (Ronnie is not permitted to participate). This is done behind the scenes so as not to take time from the meeting, but if you know Coy and Sue, as we all do, it is done right. However a question has been raised as to the possible motives of Coy at the last meeting. It just appeared a little strange that when the prize was a 1" Stanley cabinet chisel the Treasurer of the GUILD, Walter Barnett, got the prize. Let's watch that buttering up the Treasurer, Coy.

\*\*\*\*\*

## Thank You

At least, for the past four years, our GUILD has had the singular privilege of holding her meetings at Acton's. At first glance this may not seem like much but there are things like wear and tear, power bill, the benches we sit on, and the welcome sight of coffee and cookies at the sing-in table. Then at the November meeting what a wonderful surprise-popcorn, made in a machine just like you see at the county fair together with a tub of soft drinks iced down to wash the popcorn down. We all should take a moment to let Sue and Ronnie know how much we appreciate them. We also appreciate their keeping the store open for our convenience for this makes for a very long day for them.

\*\*\*\*\*

## Study Classes

The program is on hold, but only temporarily. We regret that Dr. Armstrong has an ailment which will prevent him from directing the Hobby classes. Ronnie says we will still have them, however, so listen for the announcement of the commencement. Your money (deposit) is safe so don't worry about that. It is appropriate to thank Ronnie for opening his plant up to us to hold the classes.

## Toys For Tots

Just a word of thanks for your usual good support for this program. To those of you who didn't participate, you are the loser. It is a good feeling to know we tried our best to produce a quality toy and that because of our effort some child, or children, will receive a Christmas present that would not have had one if we had not made the effort. To those of you who did participate, thanks, and may your Christmas be brighter because you cared enough to participate.

\*\*\*\*\*

## Show and Tell

It is beginning to look like this little program is a complete failure. Ivan Kronberg brought two of his wormy-holed soft maple bowls to the last meeting and we were amazed at his skill. Lovely bowls, and we appreciate them. But, only President Leonard brought anything besides Ivan, and only the President at the previous meeting. So, we will provide a table one more time, January meeting, and if you all don't bring some of your work then we will abandon the program.

\*\*\*\*\*

## Free Plans

Mr. Jim Lamb, who presented our program DEFT stains and varnishes in October, has sent us sample plans to several pieces of furniture - Butler's Table, Bookcase, Waterbeed Storage Frame, Four-Poster Bed, Oak Cabinet, Linen Cabinet and an Armoire. The folks at DEFT have sent us the message, thru Mr. Lamb, they will be happy to furnish us copies of any of these plans we want at no charge. At the January meeting they will be available to examine and sign up for the one(s) you want. We really appreciate this generous offer, and now you have an added incentive to attend the January meeting.

## The Election

It cannot be said that anyone was "railroaded" into office but the slate of officers for next year was so warmly received they "slid" into office as if on a greased platter. For the record, we appreciate the nominating committee, consisting of Ronnie Acton, Frank Jones and Ivan Kronberg, coming up with a really fine group to lead us in 1988.

They are as follows:

### OFFICERS

President . . . . . Nelson Brooks  
 First Vice President . . . Ronnie Acton  
 Second Vice President . . . Frank Jones  
 Treasurer . . . . . Walter Barnett  
 Secretary . . . . . Kerry McCalla

### BOARD OF DIRECTORS

Ivan Kronberg            Leonard Sanders  
 Dale Lewis                Anita Skocik

## Christmas Party

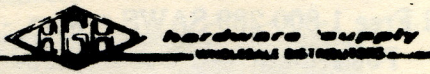
The one thing that distinguishes our GUILD from a lot of other similar groups is the togetherness, or club-like atmosphere and attitude of our members. We have enjoyed a Christmas party each year since our formation and it has traditionally been held in conjunction with the delivery of our toys to the Toys for Tots Auction. Since the auction will be held this year, as previously, we know the majority will still want to get together for Christmas. Accordingly, arrangements have been made to meet at the Helena United Methodist Church at 6:00 P.M. on December 11, 1987. To get to the Church, turn onto Hwy. 58 (depending on your direction, the last/first street after/before Acton Moulding) and go six blocks. Get there at 6:00 and we will eat at 6:30. Now, we can't eat unless you bring it. About the best food that can be had at a gathering like this is the COVERED DISH. Man, what great food comes out when the covers are removed from

those dishes. What to bring? Have your wife prepare the dish she considers to be her best one, whether it be meat, casserole, vegetables, salads or desserts - and, of course we need all of those. It is amazing how often this arrangement produces a complete variety of all needed dishes. How much to prepare? Enough of whatever you bring to feed your family - by so doing there will be more than enough of everything. Coffee and Tea as well as plates, cups, napkins, knives/forks/spoons, etc. will be furnished by the GUILD. We will sing some songs, do a little mixing, and generally have a good time. Now is your chance to show your wife what a great-group of men you meet with each month and for her to "show off" her excellent skills with fine food. So that we may have some idea of how many to expect, please call Leonard (or his wife DOT) at 822-6876 and let them know you are coming and approximately what dish(s) you will bring with you. This should and will be a great party.

## November Meeting...


(continued from page 1)

refasten. Then install Galley Rails up front, on the top edge of the cabinets, and the Mrs. can display her collection of plates, platters etc. by standing them up with the Galley Rail holding the bottom of the plate and the plywood (you slid back) holding the plate up. Hardly mentioned here is the alternative of building all new cabinets. However, as Ronnie pointed out, the original cabinet frames, and their fastenings to the wall or floor are probably sound. It is the doors that everyone sees, not the frame, so why monkey around with something that doesn't need it. There is the question of extending a frame to lengthen the cabinets or to replace a two-door with a one-door. Ronnie can answer those questions. We really appreciate Ronnie taking his valuable time to prepare our program and for presenting it so we could understand it.



**Complete Cabinet Hardware Supply**

- ABRASIVES
- CABINET HARDWARE
- DECORATIVE WOOD MOULDINGS
- APPLIANCES
- COMMERCIAL HARDWARE
- GLUES
- LOCKS
- EXTENSIVE LINE OF WOODWORKING MACHINERY



3912 Second Avenue South  
 BIRMINGHAM, ALABAMA 35222  
 TELEPHONE 206-596-4655

**ALABAMA LUMBER & SUPPLY CO.**

4204 1st Avenue, South  
**592-6331**

*Hardwood Lumber & Plywood  
 Builders & Cabinet Hardware*

**Ray & Ralph Zorn**

INJECTA  
**INCA**  
 Wood  
 Working Machines

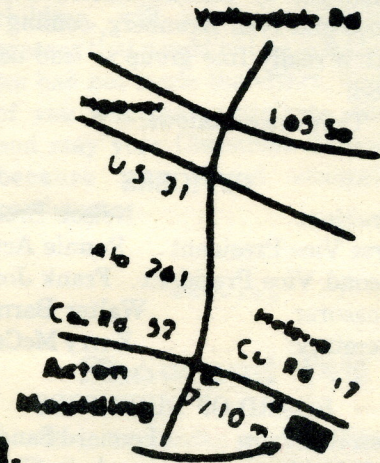
**HEGNER**

*Makita*  
 POWER TOOLS

**VEGA**  
 Wood  
 Working Machines

Record  
 Marples  
 Watco Stain  
 Minwax  
 Books  
 DML  
 Saw Blades  
 Router Bits

**Mouldings**  
 Stair Parts  
 Hardwood Lumber  
 Cabinet Plywood  
 Hardware — Handtools



**Acton**

*Moulding & Supply*

8 to 4:30 M-F. — 7:30-12 Sat.



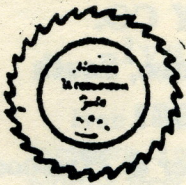
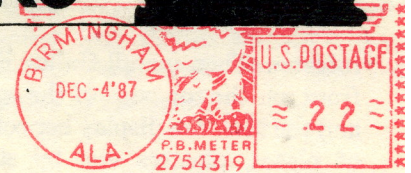
County Road 17

Helena, Al.

205-663-0130

**BIRMINGHAM SAW WORKS**

P. O. Box 126 • Birmingham, Alabama 35201  
 Call Toll Free 1-800-289-SAWS • Mon. - Fri. 7 - 5  
 Powermatic — Delta — Freud  
 Easy Access From I-65 and Red Mtn. Xpressway



The Alabama Woodworkers Guild  
 P. O. Box 506  
 Helena, AL 35080

