



NEWSLETTER

VOLUME VI

NUMBER 4

APRIL 1988

OFFICERS

Nelson Brooks President
 Ron Acton 1st Vice President
 Frank Jones 2nd Vice President
 Walter Barnett Treasurer
 Kerry McCalla Secretary

Leonard Sanders Newsletter Editor
 Ivan Kronberg Board of Directors
 Dale Lewis Board of Directors
 Leonard Sanders Board of Directors
 Anita Skocik Board of Directors

PRESIDENT'S LETTER

This is a busy and exciting time for our Guild. The Spring Show is set, we have weekend workshops and our continuing Thursday night woodworking class. I encourage each member to participate in our workshops and also be sure to thank those members who came out on Saturday and gave their time.

I encourage everyone to get busy and finish those items for our Spring Show. Also I would like to encourage everyone to attend our meetings. We've had some great guest speakers and have some great one's lined up for future meetings. Hope to have some more benches soon so that no one will have to stand.

See you at the next meeting and bring a friend.

Nelson

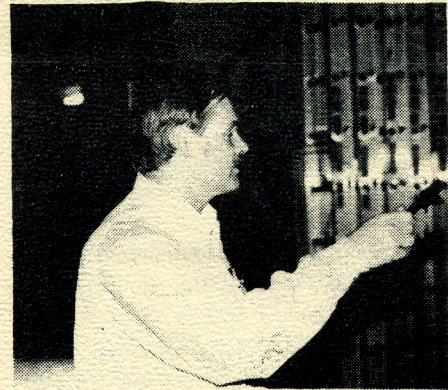
NEXT MEETING April 14th

Let's clear up the starting time - It is 7:00 o'clock p.m. We used to meet later, but found most of you would rather start earlier and get home earlier. Now, on to the program.

We are fortunate to welcome David Traylor to our April meeting. David is a former Guild member who turned professional some five years ago. His shop is located just off Hwy 31 behind 84 Lumber, where he specializes in custom designs, cabinets and other objects. We have had two previous workshops dealing with dovetails, hand cut and band saw cut, and now David is going to demonstrate the router cut on a Leigh Dovetail Jig. A buyer's guide to Router Dovetail Jigs is featured in the March/April 1988 American Woodworker magazine. Read it, if you can, and you may get more out of David's program.

DOOR PRIZE

We were so glad to have Anita Skocik back. She was asked to select the number(the drawer)to determine the drawer who turned out to be Bob Graves who was awarded a forstner drill bit.



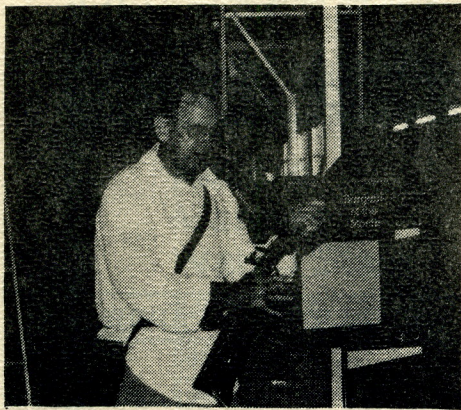
KERRY'S ANTIQUE

Kerry McCalla continues to amaze us with his fabulous collection of tools. This month he featured Marking Guages. It is recorded that marking guages were in use by the Egyptians many years B. C. and have been in constant use throughout recorded history. The guages he demonstrated included: 1) A Stanley, and he said a Stanley catalog from the late 1800's showed some 25-30 guages, 2) Another Stanley patented in 1867, 3) A Sholl guage patented in 1864, 4) A Winslow, dated 1900 for marking inside or outside. Thanks, Kerry.

NEW MEMBERS

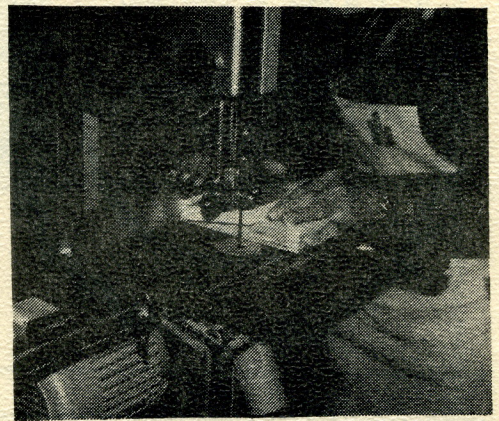
It is always a pleasure to announce our new members. We are glad they agree with us, that we have the finest Guild anywhere. Make these men welcome at the next meeting:

Wm. H. Armstrong
Bryan E. Bayley
Fred E. Baker
B. D. Caudle, Jr.
Thomas M. Ellis
Terry Fick
R. Lee Franklin
Michael W. Fuller
George C. Gould
Jon L. Martin
Gary L. Myers
John Patterson
Dr. Wm. M. Rosenblum
James Smith
Robert H. Taylor
John W. Hawkins



MARCH'S PROGRAM

Richard McRee, a member of the Guild presented a truly fascinating program on the Pennsylvania Rifle, or as it's sometimes called, the Kentucky Rifle. This gun was in its prime (no pun intended) during the period 1750-1800. The long rifle originated by Irish decedents and the short rifle by the Germans. There are ample books and periodicals available on the history and building of these rifles and should be followed to the letter so as to end up with a faithful reproduction. These guns are functional too, but Richard says (laughingly) when he fires one for the first time, he holds it inside a car tire. These things aren't cheap either, and require a considerable amount of patience and skill to assemble. Blank stocks from curly maple may be purchased for \$75 - \$110; a barrel, \$90; the lock, \$70; trigger \$17.50; a usual cost of some \$300 and 100 hours will get you one free. Now we know where the expression "Lock, Stock and Barrell" comes from. As the assembly nears completion the patch box is attached to the butt end of the stock and carving of designs on the stock may be added to suit the builder. Richard has now made five rifles and the two he brought to the meeting were beautiful to behold. Thanks, Richard.



SATURDAY WORK SHOPS

The first Saturday Mini-Shop was held on March 12th at Frank Jones' home. The subject of the demonstration was hand-cut dovetails. Members present included Bill Battle, Richard McRee, Dennis Woods, Gene Benitez, Frank Ryerson, Roy & Dot Wood and Steve Onisick. Frank reports they worked around 3 hours, made two sets of dovetails out of ponderosa pine and each of the attendees got some work experience.

The second Mini-Shop was held the next Saturday, March 19th at Actons'. Frank Jones directed this shop also, dealing with making dovetails on the band saw. Present for this shop were Harold Phillips, Frank Ryerson, Charles Alexander, Dennis Woods and Leonard Sanders. A jig is required, in fact two jigs, to make dovetails on a band saw. Frank had prepared the jigs in advance from an article in the Fall 1987 issue of *The American Woodworker*. All participants took part and, unbelievably, made dovetails. **THERE WILL BE MORE MINI WORKSHOPS COMING UP.**

Free hands on workshops to be held at Acton Moulding. Plan to attend and bring a friend. The workshops will meet from 9:00 a.m. til noon as follows:

1. Beginners woodturning - April 23
Instruction by Leonard Sanders
2. Steambending - April 30
Instruction by Ivan Kronberg
3. Advanced Woodturning - May 7
Instruction by Dale Lewis

SPRING SHOW -

Our Spring Show will be May 14 till May 21 at The South Central Bell building downtown. The building is located at 600, 19th Street North. We had a very successful show there 3 years ago. This year should be even better. More details will follow as to exact time of set up, etc.

As discussed at our last meeting, we will have 3 levels of exhibition. Novice, intermediate and craftsman. The intermediate and craftsman level will be Juried and Ribbons given for 1st, 2nd & 3rd place in the two levels. Several members may want to enter in intermediate & craftsman and not be juried. That's fine. Just let us know and your piece will not be judged. We will also have a best of show. This will be voted on by members of the Guild who enter works in the show, with a Ribbon being awarded.

We will also be giving some tools as prizes. Everyone who enters the show will have their names put in a bowl, we'll draw for some great prizes. So to be eligible, you must enter!

This should be a great show and can only be a success with a lot of participation.

WOODWORKING FAIR

On May 5, 6 and 7th, a woodworking fair will be held at HGH Hardware Supply, 3912 2nd Avenue South, Birmingham, Alabama. Representative's from several companies, including Bosch, Poton Cable Delta, Ryobi and others will be on hand giving demonstrations and discounts on their tools and equipment. Plan to attend.

Meetings To Start At 7:00 P. M.

WOULD YOU BUY A USED CAR FROM THIS MAN?



DEFT PLANS

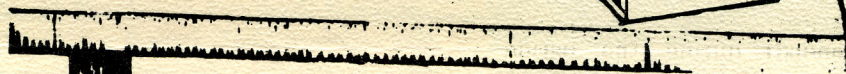
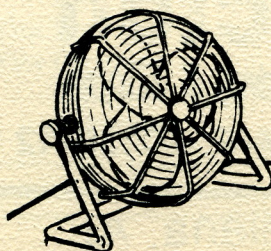
The plans some of you signed up for were available at the March meeting, but some of you weren't there. They will be there for you at the April meeting, so please attend and pick them up.

WHEN DUST GETS IN YOUR EYES

You can get lost in a cloud of dust when working with an orbital or belt sander. The dust obscures your work, to say nothing of restricting comfortable breathing.

TIP: Blow those troubles away with a small, nonoscillating household fan placed 3 or 4 feet away from the sander you're using. The trick is to turn the fan to a low speed and place it at a right angle to your work and to remove the dust without raising a dust storm. In small shops, however, this may cause an airborne dust problem.

—From the *WOOD* magazine shop



ALABAMA LUMBER

&

SUPPLY CO.

4204 1st Avenue, South

592-6331

Hardwood Lumber & Plywood

Builders & Cabinet Hardware

Ray & Ralph Zorn



hardware supply
WHOLESALE DISTRIBUTORS

Complete Cabinet Hardware Supply

- ABRASIVES
- CABINET HARDWARE
- DECORATIVE WOOD MOULDINGS
- APPLIANCES
- COMMERCIAL HARDWARE
- GLUES
- LOCKS
- EXTENSIVE LINE OF WOODWORKING MACHINERY



3912 Second Avenue South
BIRMINGHAM ALABAMA 35222
TELEPHONE 205-595-4655

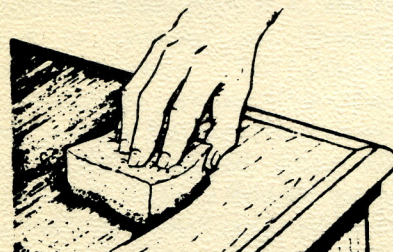
TIPS FROM YOUR SHOP (AND OURS)

SOFT TOUCH WITH STAIN

Using a paintbrush to apply oil-based stains works well enough, but cleaning the brushes afterward takes time and wastes paint thinner.

TIP: Use scraps of foam rubber as stain applicators. You can buy leftovers at crafts stores for pennies and cut pieces to just the size and shape to fit the staining job. The foam rubber reaches into corners and cracks while your hands stay clean. When finished staining, simply discard the applicator.

—Thornton H. Waite, Idaho Falls, Idaho



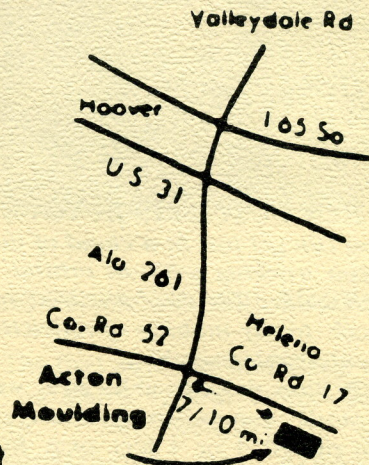
INJECTA
INCA
 Wood
 Working Machines

HEGNER
 Scroll Saws
Makita
POWER TOOLS

VEGA
 Wood
 Working Machines

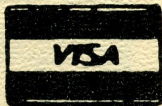
Record
 Marples
 Watco Stain
 Minwax
 Books
 DML
 Saw Blades
 Router Bits

Mouldings
 Stair Parts
 Hardwood Lumber
 Cabinet Plywood
 Hardware — Handtools



Acton
 Moulding & Supply

6 to 4:30 M-F. — 7:30-12 Sat.



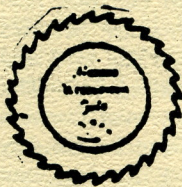
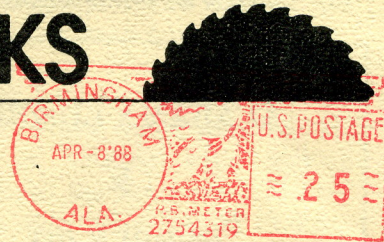
County Road 17

Helena, Al.

205-663-0130

BIRMINGHAM SAW WORKS

P. O. Box 126 • Birmingham, Alabama 35201
 Call Toll Free 1-800-289-SAWS • Mon. - Fri. 7 - 5
 Powermatic — Delta — Freud
 Easy Access From I-65 and Red Mtn. Xpressway



The Alabama Woodworkers Guild
 P. O. Box 506
 Helena, AL 35080

