



# NEWSLETTER

VOLUME VI

NUMBER 10

OCTOBER 1988

## OFFICERS

Nelson Brooks	President	Leondard Sanders	Newsletter Editor
Ron Acton	1st Vice President	Ivan Kronberg	Board of Directors
Frank Jones	2nd Vice President	Dale Lewis	Board of Directors
Walter Barnett	Treasurer	Leondard Sanders	Board of Directors
Kerry McCalla	Secretary	Anita Kscocik	Board of Directors

## PRESIDENT'S MESSAGE

There's a lot of exciting things going on in the Guild right now and I encourage everyone to attend the next meeting. Our fall class has started, the TFT program is in high gear, we will be voting to change our emblem (logo), or not, and Ronnie's Place has taken on a new look, so if you've missed some meetings lately this would be a good night to get back in the swing of things.

We've had a lot of people sign up to make toys for the TFT program, but we need more. Just think back to when you were a kid and remember how excited you were on Christmas morning when you saw all those toys under the Christmas tree. I promise if you make some toys it will make you feel better and enjoy Christmas a lot more.

Our fall class started on October 11, and I want to thank Fred Baker for teaching again. Also I want to thank each one and encourage each one who has enrolled to attend all the sessions. This is an important part of our Guild to make it the best one in the country.

See you at the next meeting. Bring something for show & tell and also bring a friend.

Nelson

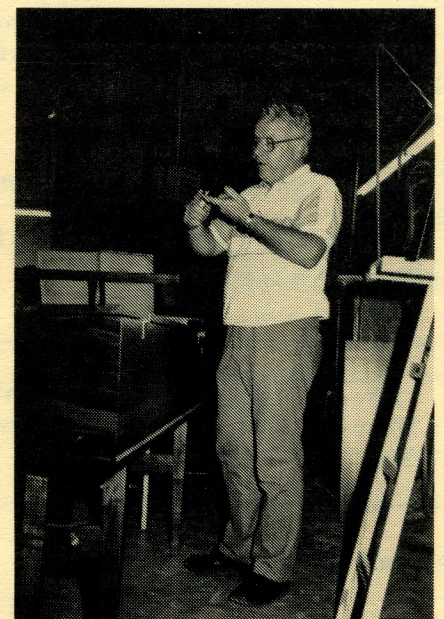
## NEXT MEETING OCT. 13 - 7:00 PM

Conditions beyond our control have dictated a different kind of program. First off will be Kerry McCalla, the antique fellow. Kerry will have just returned from a tool show in Milwaukee and is going to spend a few more minutes than usual discussing his old tools. Then some of you toy makers will be asked to show your toy(s) and describe the wood they are made from, how they are finished and how long it took you to make them. Then as time permits, questions from the members regarding "how to" or "how do you do" something. Maybe you have wondered how to use a dado set; how to use a router; how to use a mortising attachment on your drill press, or how to make mortises without an attachment for the drill press. Write down your questions and someone will answer them for you. (By the way, please tell Nelson of any type program you would like to see us have).

## LAST MONTH'S (SEPTEMBER) PROGRAM

- And what a program. Jim Caldwell, one of our members, did a splendid job of explaining the complex problems encountered in building a Harpsichord and a Clavichord. The earliest record of the harpsichord is about 1387 in Europe. The French, Flemish, German and Italian

instrument makers all had a hand in making them. The Italian models were lighter weight than the Flemish, and the German instruments were heavier than the French. The advancement of the engineering and techniques was inhibited because craftsmen would not pass along to other craftsmen the procedures they had developed for fear of competition. The harpsichord has two sets of 8' strings (front 8 and back 8), one set of 4' strings; it has 61 keys, each of which strikes three strings, and each string has a pressure of 8 lbs. So, 61 keys times three strings = 183





strings, times 8# = 1,464# pressure on the case. The sound board is made of 1/8" quarter sawn spruce – and has different thicknesses from spot to spot on it, which is done by planing and sanding. The French used Limewood (similar to Basswood) in making their cases. Jim has been working on his for about four years (some 1200 hours has gone into it). He started with a basic kit of the hardware, strings and specialty items, but built the case himself of Walnut, including the hinged lid (as on a piano), the legs, music rest, etc. What a marvelous job he has done, and we appreciate his sharing the many hard to do tasks he was confronted with as he moved along with it. The best part of all, however, (and Jim, try not to be offended), was Jim's lovely wife, Linda, who played this complicated instrument for us. Linda is a music teacher, and it became obvious she has been caught up in the excitement of building the instrument. We appreciate her making the program more enjoyable for us (after all, she is a lot easier to look at than Jim). By the way, the basic kit referred to above is \$3,000, a full kit is about \$14,000, and an assembled one about \$35,000.

Compatibility is when neither spouse has a tie-breaking vote.

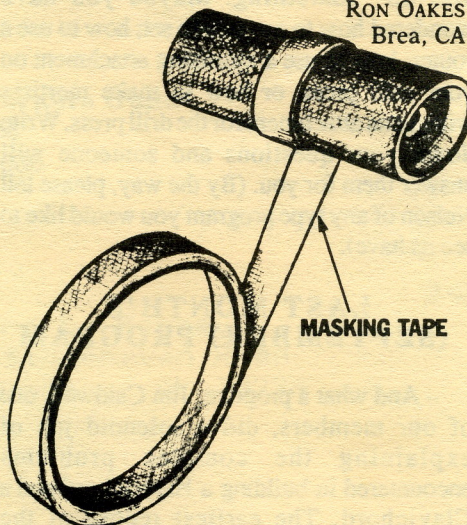
Why does it take the mail 24 hours to get a bill to you, but a check takes a couple of weeks?

By now you have received Ben Neighbors' letter, and that together with the announcements made at our meetings about this year's program should have you fired up to do your part to make the program a rip-roaring success. It is inconceivable that any of our members could, or would, take a calloused attitude toward making a few toys for disadvantaged children for Christmas. We were privileged to have Sgt. Nolan Hawkins, Ret. B'ham Police Dept., who is, and has been for several years, the director of TOYS FOR TOTS, to visit our last meeting and speak on behalf of TFT. The Sergeant revealed the TFT Program served some 400 children its first year, and last year served some 11,400 children. He said it is their intention to screen children for need so as to serve the greatest number of needy children. Ben has put together an excellent program, including the incentive to participate so as to be eligible for the drawing at the November meeting for the scrumptious prizes he expects to have. For this reason (the drawing) please complete and bring your toys to the November meeting. The officers and directors are convinced the Guild has an obligation to the community to participate in TFT, and it was the consensus of you all, the members, when answering the questionnaire earlier this year, that the TFT Program was the program you preferred to participate in. So, how about it, guys and gals, are we going to get the job done, or not?

*Belt Sander Tracking*

If the belt on your belt sander won't track properly no matter how you adjust it, place two or three wraps of masking tape around the center of one of the drums. This usually fixes the problem.

RON OAKES  
Brea, CA



Some of you haven't picked up your copy of our new roster. There were some of you that weren't included in it due to the recentness of your becoming a member. To accommodate you, there has been prepared an insert, a single page, which gets most of you rosterized (is that a word)? We won't be printing again in the near future so pick up your roster and an insert at the next meeting.



**Complete Cabinet  
Hardware Supply**

- ABRASIVES
- CABINET HARDWARE
- DECORATIVE WOOD MOULDINGS
- APPLIANCES
- COMMERCIAL HARDWARE
- GLUES
- LOCKS
- EXTENSIVE LINE OF WOODWORKING MACHINERY



3912 Second Avenue South  
BIRMINGHAM, ALABAMA 35222  
TELEPHONE 205-595-4655

**ALABAMA LUMBER  
&  
SUPPLY CO.**

4204 1st Avenue, South  
**592-6331.**

*Hardwood Lumber & Plywood  
Builders & Cabinet Hardware  
Ray & Ralph Zorn*

## NEW MEMBERS

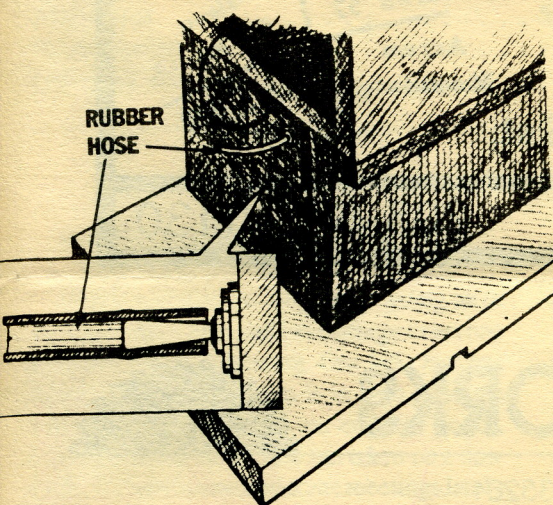
The life blood of the Guild are you new members. We are so very glad to have you and hope you get as much out of membership as our old duffers do. Listed below are the newest members and a couple of renewals:

Virginia Campbell	Wayne Taylor
Carl Cullison	Jerry Vines
Marion Glass	Kenneth Warr
Wayne Satterwhite	Leslie Wilson

### *No Fumble Toggle-Switches*

Recessed and short toggle switches can be improved by slipping on a short length of  $\frac{1}{8}$ -in. I.D. rubber hose. The hose makes the switch easier to find and operate without fumbling.

WILLIAM GUTHRIE  
Pontiac, MI



## KERRY'S ANTIQUES

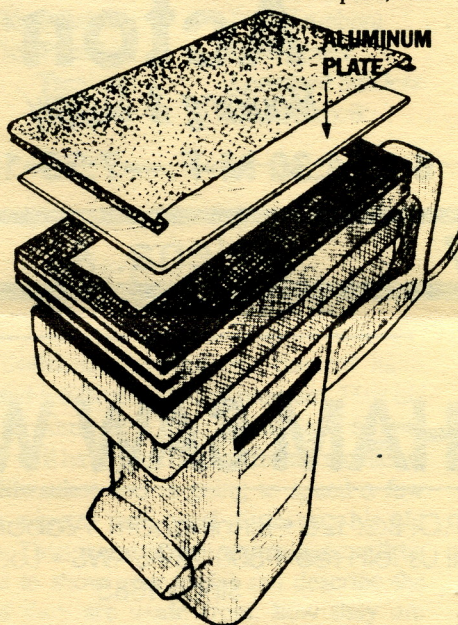
This month (September) it was spokeshaves. So you think the spokeshave is a recently conceived tool? Wrong. They date back at least to 1816, and probably before that. You need only to take a close look at artwork in the last century and you will see that some of the work could only have been done with a spokeshave. Some of the artisans and craftsmen who utilized the unique abilities of a spokeshave were coopers, barrel makers, cobblers, leather workers, chair makers, and wheel makers. Through the years many special spokeshaves have been devised to do special jobs and some of them are: (1) adjustable handle (for tight quarters), (2) concave and convex, (3) flat on one side and curved on the other, (4) the English and French versions of it. Kerry relates that the 1870 catalog of Stanley had a whole page of them. As always, we appreciate you, Kerry.

### *Sanding Flat*

When sanding a large, flat surface with an electric pad sander, excessive pressure can result in a wavy surface because the soft rubber pad allows the sandpaper to dip down into softer areas and remove more material.

To eliminate this problem, install a  $\frac{1}{16}$ -in. thick aluminium plate between the rubber pad and the sandpaper when a flat surface is important. Make sure that the aluminum plate is flat and its edges and corners are smooth and generously rounded to prevent it from marring the work if it accidentally touches it. Fasten the plate to the rubber pad with double-sided carpet tape.

WALTER J. MORRISON  
Northport, NY



## LOGO FOR THE GUILD

President Brooks spoke to this last month. You are acquainted with the saw blade we have been using since inception. We will have to furnish the printer with a new copy, because the old one doesn't duplicate well any more, so it occurred to the Board you might have some thoughts on redesigning the logo. If you have an idea, but can't draw, tell Nelson about your idea and he can get it drawn for us. We aren't chafing to change the one we have, for it has served us well, but if there is a better idea out there amongst you, let it be known.

## ATLANTA INTERNATIONAL MACHINERY AND TOOL SHOW

By the show of hands at the September meeting, there were a large number of you who attended this show. The Guild encourages you to make an effort to attend some of these shows. You talk about fun — you should see some of the machinery and tools that are available that you have never heard of. It is absolutely awe inspiring to watch some of the new machines in operation and see the fantastic results they attain. We will try to keep you posted in the Newsletter about upcoming tool shows. Then there are the shows of professional craftsmen from time to time; they can be a source of ideas and inspiration in your own crafting.

### RUDE OSOLNIK WORKSHOP

Rude Osolnik, Mr. Woodturner, will be here either Nov. 12 or Nov. 19, at press time the date had not been worked out. This is a great opportunity to learn from the best and fastest woodturner in the USA. Rude is great at sharing his secrets and you really don't want to miss this workshop. There will be a \$15.00 charge to help offset the cost of bringing him in.

## CHRISTMAS PARTY

We will have our Christmas Party at Helena United Methodist Church on December 3rd, 1988 at 6:30 P.M. This will be a great time of food and fellowship. Like last year it will be covered dish supper, with the Guild furnishing the coffee, tea, plates, cups, silverware, etc. There will be prizes and awards given. More information to follow, but mark your calendar now.

## OFFICERS MEETING

All Officers & Board of Directors to meet at 6:15 prior to meeting.

INJECTA  
**INCA**

Wood  
Working Machines

**HEGNER**  
Scroll Saws

*Makita*  
**POWER TOOLS**

**VEGA**

Wood  
Working Machines

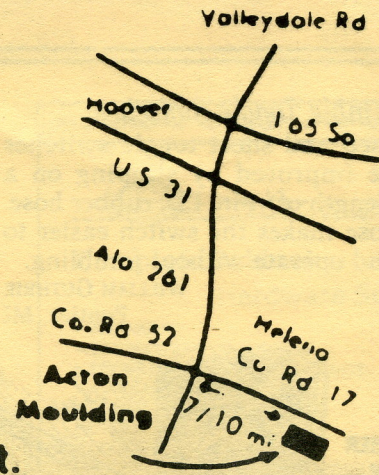
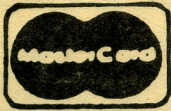
Record  
Marples  
Watco Stain  
Minwax  
Books  
DML  
Saw Blades  
Router Bits

**Mouldings**  
Stair Parts  
Hardwood Lumber  
Cabinet Plywood  
Hardware — Handtools

**Acton**

*Moulding & Supply*

6 to 4:30 M-F.—7:30-12 Sat.



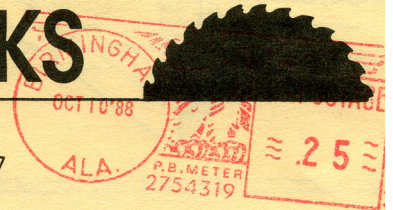
County Road 17

Helena, Al.

205-663-0130

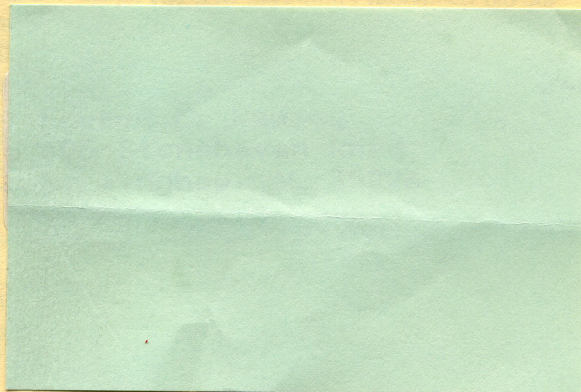
# BIRMINGHAM SAW WORKS

P.O. Box 126 • Birmingham, Alabama 35201  
Call Us Toll Free 1-800-289-SAWS • Local 252-9757  
Since 1885



**The Alabama Woodworkers Guild**

P. O. Box 506  
Helena, AL 35080



CG

