



NEWSLETTER

VOLUME VII

NUMBER 1

JANUARY 1989

OFFICERS

Nelson Brooks President
Ron Acton 1st Vice President
Frank Jones 2nd Vice President
Walter Barnett Treasurer
Kerry McCalla Secretary

Jim Caldwell Board of Directors
Ivan Kronberg Board of Directors
Dale Lewis Board of Directors
Ben Neighbors Board of Directors
Leonard Sanders Board of Directors
Anita Skocik Board of Directors

PRESIDENT'S MESSAGE

Happy New Year!! I hope everyone had a super holiday season and found a lot of shiny new tools under your Christmas tree.

As I start my second year as your President, I want to thank the other officers, committee members, and each and every member who has faithfully attended our meetings and helped spread the word about our Guild. Thanks for making 1988 a good year for our Guild.

Last year we had excellent meetings, spring workshops, a good spring show, a FANTASTIC Toys for Tots campaign, a super Christmas party and finished the year with Rude Osolnik coming here. But that was 1988, and with any program you measure success by topping the previous year. So, as we begin 1989, I ask for your help, advice, and continued support to make '89 a super year for us.

Last year our theme was PARTICIPATION and EDUCATION. I feel we should carry that over this year. Attendance at our monthly meetings has been great. Participation in our workshops has been great. Currently we have 23 people enrolled in Fred Baker's class. Hope they all graduate Fred!! Soon we'll have a library so you can check out books. We're making plans for our 1989 Spring Show and more workshops. So remember — participation and education mean success!!

Again I want to thank everyone who made toys in 1988, and making this program a huge success. So I don't get caught trying to make toys a week before they're due, I'm making a New Year's resolution to make five toys each month this year. Will you join me in making this commitment?

See you at the next meeting. Remember our special Show & Tell this month and bring a friend.

Nelson

JANUARY PROGRAM

It is a pleasure to announce our first program for 1989 will be outstanding. Charles Ellis, one of our members, is a professor at Indian Springs School and specializes in making stringed musical instruments. Among the instruments he makes is the banjo, harps and dulcimers. Included in the demonstration will be steam bending laminated strips he uses in his instruments. There is a lot more to making stringed instruments than meets the eye when you consider the stress that is put on glued joints when the strings are tightened for use. Professor Ellis sells his instruments so he must know something about making them and we will benefit much from seeing and hearing this demonstration.

CHRISTMAS PARTY

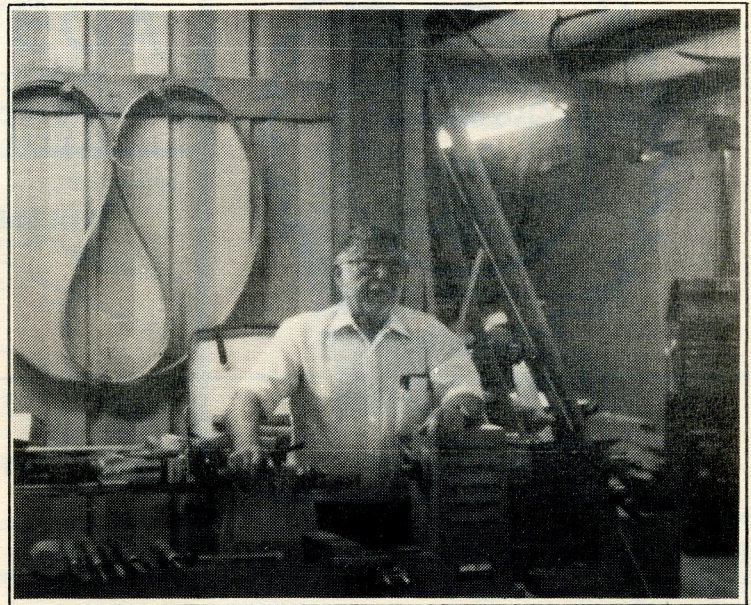
Our second annual Christmas Party was a huge success. There were some 125 of us to enjoy a wonderful feast, great fellowship, and a thoroughly entertaining skit led by Sue Acton and assisted by three of her friends. After dinner and the program, we returned from the auditorium to the dining hall for the awarding of prizes to the toy makers. What a marvelous success our Toys for Tots project was. About sixty of our members made close to 600 toys. Not just toys, but great and wonderful toys. There were toys from little wheeled cars all the way up to rocking horses, and there were about twenty rocking horses. Ironing boards, miniature pool tables, doll beds (20 or 30), all manner of wheeled cars, trucks, airplanes (35), helicopters, pull toys, push-stick toys, little chairs, little benches, little stools, little hand-held irons (for ironing doll clothes), and others were turned over to the TFT people. They had to send a truck to haul them away. You participants are to be congratulated and we hope those of you that didn't will next year. As for the prizes, as previously announced, the names of each participant were placed in the "hat" one time for each toy he had produced and with some 600 names in the pot President Brooks engaged the services of a cute little girl (not the first time he has done so) to reach in the box and draw the names. Hopefully, the following list is complete. The prizes were furnished by the Guild out of Guild funds except for three furnished by Birmingham Saw Works, gift certificates by Fred Sandlin for sharpening and some rosewood donated by Anita Skocik.

SPECIAL RECOGNITION

A special moment was observed at the Christmas Party when President Brooks announced the officers and directors, on behalf of the members, want to recognize two members without whom our Guild might not be in existence. These two men conceived and organized the Guild some six years ago and have continued to promote and support it. Spruce McRee, the Guild's first president and co-organizer, could not be present at the Christmas Party due to work conflict, but his plaque will be delivered to him. The other honoree was Ronnie Acton, the first and only vice-president the Guild has ever had, who also received a plaque. The appropriately inscribed brass plate was affixed to a four-inch thick block of mahogany and was properly finished. In addition to the plaques, each of these men was awarded life membership in the Guild.

RUDE OSOLNIK

An event in the life of our Guild took place on December 10, 1988 which will be hard to surpass in the future. We had one of the Godfathers of American Woodturning present, in person, for a whole day of watching the Master. He is one of the founders, and serves on the Board of Directors of The American Association of Woodturners. We have several members of our Guild who are members of this prestigious group. We had to get in line to get a reservation with him, but it certainly was worth the wait. It was like watching a surgeon operate to watch him take one of his personally designed chisels and create a work of art. All the while, he was bombarding us with helpful tips, do's and don'ts, and a merry bit of chatter to keep our attention. As the day developed we were somewhat astounded to learn he does about 96 percent of his work with a total of four chisels. He says that is all one needs to get the job done. We know his chisels are for sale from Craft Supplies in Utah and may be bought with or without handles. He made one of the candlesticks he has become so famous for — the one he has made some 150,000 of and the one that put his children through college. He said he used to go in his shop at 4:00 a.m. and make candlesticks until time to go to work, then resumed making them again when he got home. Then came a cedar or redwood bowl. What startled most of us was the way he mounted the blank — lengthwise — that is. It was attached to the headstock in the center, and when it began to turn the ends of the blank were spinning toward him. He used a specially designed parting tool to make a straight cut parallel to the side of the bowl and with a well placed lick with a mallet dislodged the center, leaving a bowl. Bracelets — he made a bracelet that would delight any lady. Using scraps of hardwood, he laminated a rectangular blank from which he sliced off a piece about 1/2" thick and mounted it between the lathe centers. After rounding the piece he used his own designed tool with a hook to the side to cut the ring from the blank. If you try this, be sure to leave 2 3/4" inside. Very impressive. Then he briefly introduced us to the turning of alabaster. He warned us to have plenty of dust collecting equipment to do this; otherwise everything in sight will be covered up in white dust. Using a turned mold (looking like the center removed from a bowl) he took a circular sheet of brass, mounted the brass and mold between centers, applied a specially designed pressure bar to the bottom of the brass plate, and as it turned the brass began to take the form of the mold. When he had finished, he had a brass bowl. Rolling pins — Using scraps in his shop he laminates them into a sheet some 3" thick, cuts off the rolling pin blanks on a 45° angle, mounts the blank and turns it. He gets \$45 each for them. This has to be the outstanding program of all time for our Guild. We are surely indebted to our President for pursuing this program and making it come to pass. Incidentally, Rude extended a cordial invitation to any of us to visit him, his shop and his store when we might be in the vicinity of Berea, Ky.



GUILD LIBRARY

It was announced we will build some bookcases to house the growing number of publications we have accumulated. We have been offered a set of reference books and already have several others on hand. We expect this to develop into a really fine and useful library. Since we now have a history of engaging in the making of toys, an effort will be made to secure an outstanding library of toy plans for use in the years to come. If you are asked to participate in this undertaking, please respond.

WHATCHAMACALLIT?

We have been encouraging you for a couple of months to look around your house, garage, shop or tool box and bring to the January 1989 meeting any tools, containers, puzzles, jigs, unusual wood, or anything different that is hard to identify. The idea is to try to stump the meeting with your object. It should be fun and educational.

NEW YEAR

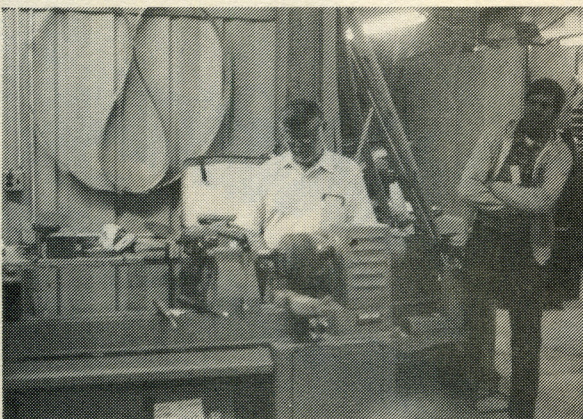
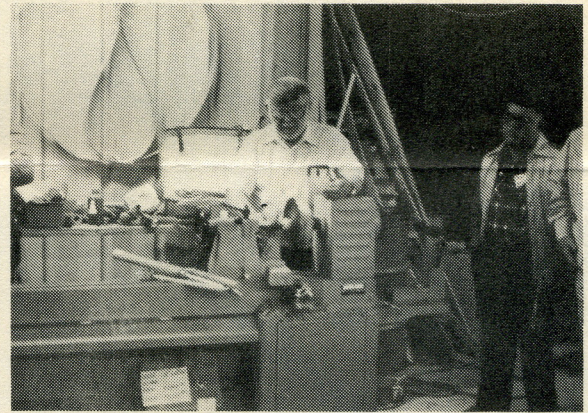
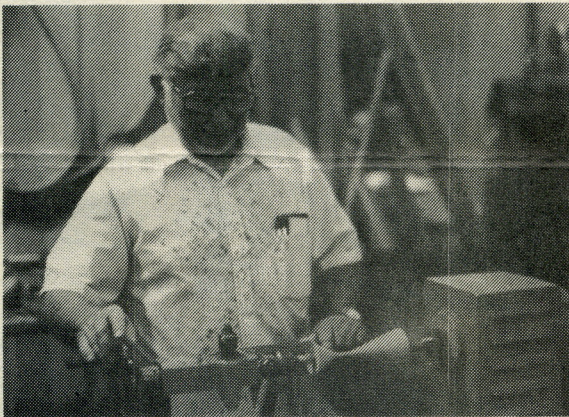
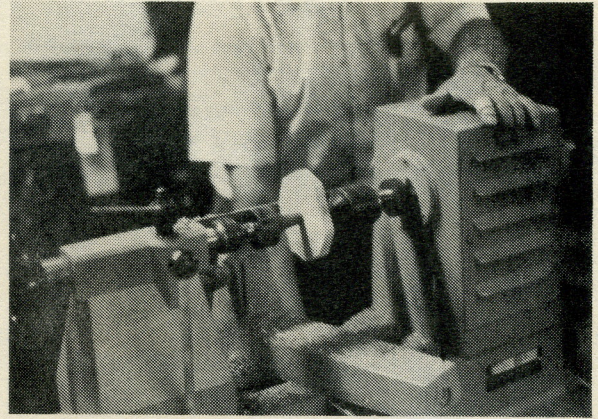
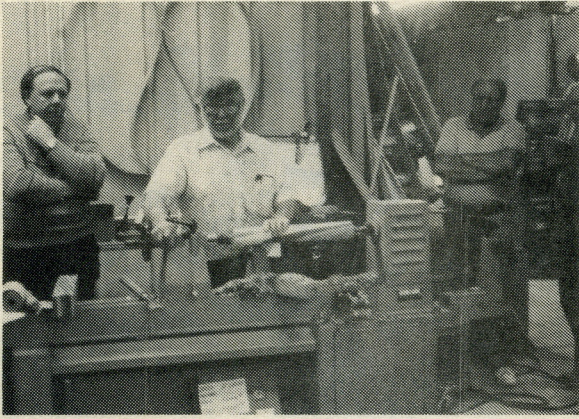
We must remind you it is that time of year again. What time? It is time to pay your dues again. You are reminded the dues are \$20 and are due now.

NEW MEMBERS

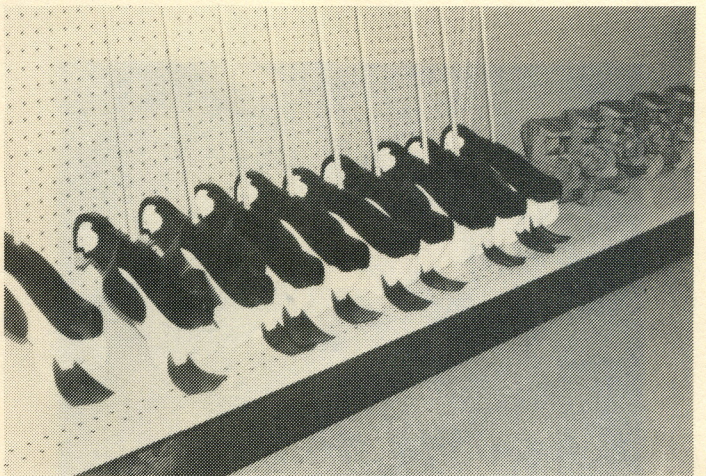
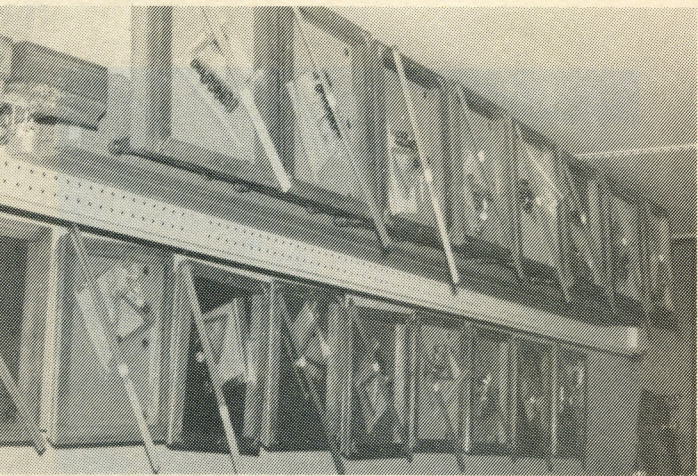
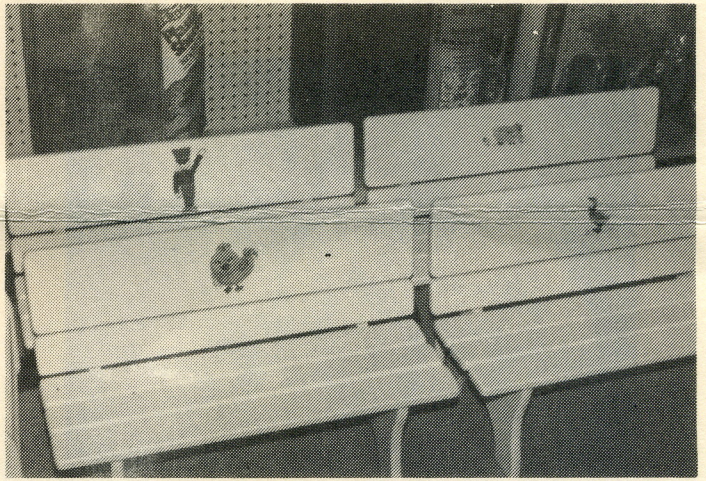
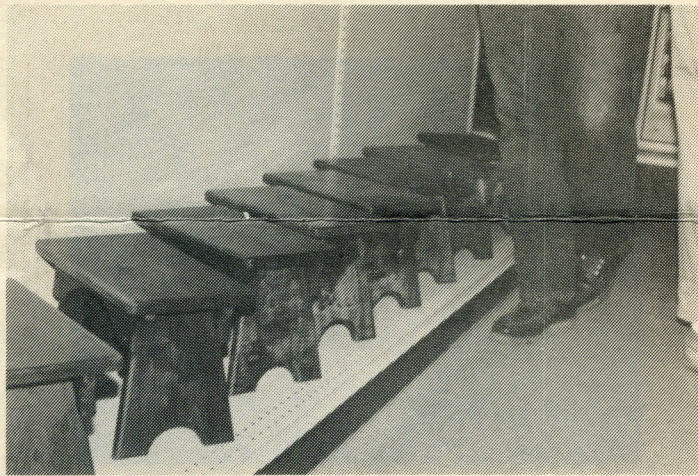
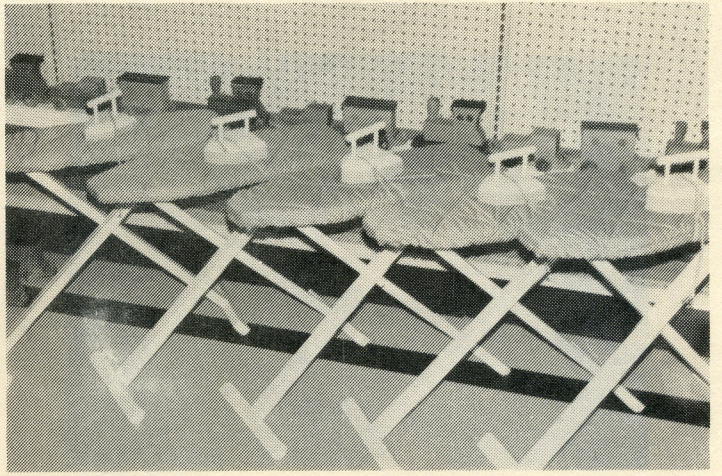
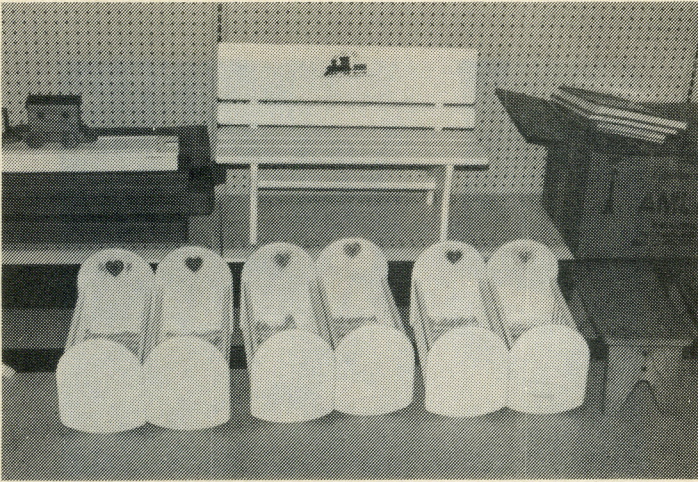
It is a pleasure to announce another fine group of new members. We welcome you, and you older members (measured in terms of membership in the Guild) make them welcome.

Bennett, Jane	Mack, Steven
Bullock, Chuck	Otwell, Milton
Clift, Bill	Patterson, Peggy
Ewing, James	Purson, Bill
Jennings, Corene	Roy, Barbara
Jennings, Roy	Roy, Judy
Kitts, John	Roy, Michael
LeBean, Jacque	Saxon, Clifford
Leader, Mark	Stewart, Jo Ann

Rude Osolnik Seminar



Some Of The Toys



The following is the way they were distributed:

PRIZE

WINNER

- | | |
|--------------------|-------------------|
| Adjust. Clamps | Leonard Sanders |
| Vise Grips | Louis Murphy |
| Adjust. Clamps | Chas. Alexander |
| 3 Cans Stain | Stephen Powers |
| Back Saw | Bob Moore |
| 2 Cans Stain | J. B. Ewing |
| Block Plane | Walter Barnett |
| Hammer | Ben Neighbors |
| Marking Gauge | M. Martin |
| Block Plane | Gene Benitz |
| Set Chisels | Bill Mahan |
| Forst. Bits | Frank Ryerson |
| Braz. Rosewood | Kerry McCalla |
| Circ. Blade* | Chas. Brown |
| Gift Cert. (Sharp) | Bill Purson |
| Gift Cert. (Sharp) | Ivan Kronberg |
| Gift Cert. (Sharp) | Jerry Devaney |
| Block Plane | Evelyn Landrum |
| Mark. Gauge | Kay Jones (Frank) |



* Awarded for making the largest number of toys — 35.

Following the Toys for Tots awards, another give-away began. The Guild expresses its sincere appreciation to Acton's for the following, and we are sure the members who got them appreciate them too:



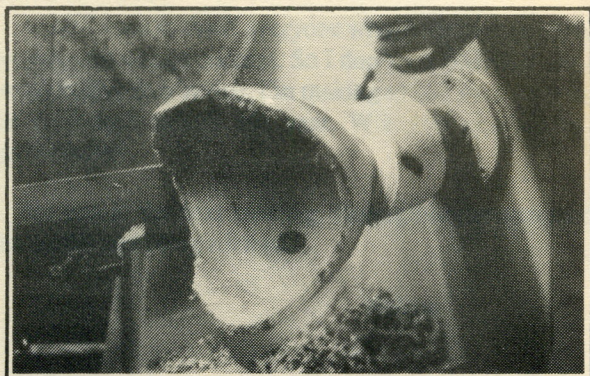
PRIZE

WINNER

- | | |
|------------------|-----------------|
| Try Square | Leon Anderson |
| Set Chisels | Harold Phillips |
| Fold. Ruler | June Battle |
| Cordless Sc. Dr. | Betty Brewer |
| Back Saw | Ed Ramsey |
| Suspenders | Fred Sandlin |
| Compass | Betty Wesson |
| Sandpaper | Joe Cleveland |
| _____ | Faye Ingram |
| Sandpaper | Elsie Baker |
| Circ. Blade | Ed. Teasley |
| Viab. Sander | Mike Key |
| Elect. Router | ___ Roy |
| Cordless Drill | Sue Johnson |



(As in the TFT listing, we apologize for any misspelled names, and for being unable to fill the two blanks shown above.)



INJECTA
INCA
Wood
Working Machines

HEGNER
Scroll Saws
Makita
POWER TOOLS

VEGA
Wood
Working Machines



**Complete Cabinet
Hardware Supply**

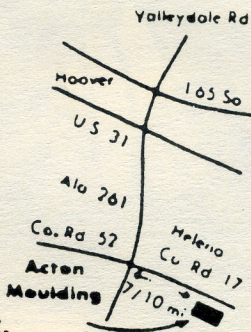
- ABRASIVES
- CABINET HARDWARE
- DECORATIVE WOOD MOULDINGS
- APPLIANCES
- COMMERCIAL HARDWARE
- GLUES
- LOCKS
- EXTENSIVE LINE OF WOODWORKING MACHINERY



3912 Second Avenue South
BIRMINGHAM, ALABAMA 35222
TELEPHONE 205-595-4655

Record
Marples
Watco Stain
Minwax
Books
DML
Saw Blades
Router Bits

Mouldings
Stair Parts
Hardwood Lumber
Cabinet Plywood
Hardware — Handtools



Acton
Moulding & Supply

6 to 4:30 M-F.—7:30-12 Sat.



County Road 17 Helena, Al. 205-663-0130

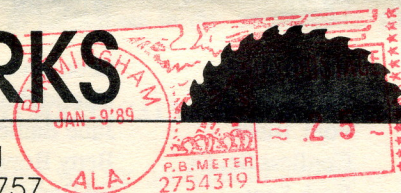
**ALABAMA LUMBER
&
SUPPLY CO.**

4204 1st Avenue, South
592-6331

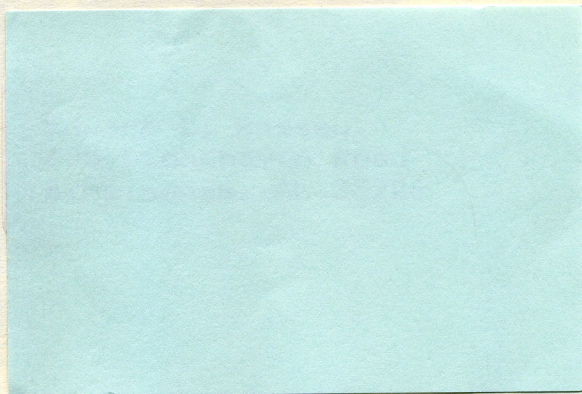
*Hardwood Lumber & Plywood
Builders & Cabinet Hardware*
Ray & Ralph Zorn

BIRMINGHAM SAW WORKS

P.O. Box 126 • Birmingham, Alabama 35201
Call Us Toll Free 1-800-289-SAWS • Local 252-9757
Since 1885



The Alabama Woodworkers Guild
P. O. Box 506
Helena, AL 35080



RG

