



# NEWSLETTER

VOLUME VII

NUMBER 3

MARCH 1989

## OFFICERS AND DIRECTORS

Nelson Brooks	President	Jim Caldwell	Board of Directors
Ron Acton	1st Vice President	Ivan Kronberg	Board of Directors
Frank Jones	2nd Vice President	Dale Lewis	Board of Directors
Walter Barnett	Treasurer	Ben Neighbors	Board of Directors
Kerry McCalla	Secretary	Leonard Sanders	Board of Directors
		Anita Skocik	Board of Directors

### PRESIDENT'S MESSAGE

First I want to apologize to those who had to stand at our last meeting. We had 80 people sign in and unfortunately some had to stand. But that shouldn't happen this month. We have repaired all the existing benches, (and added backs to some) and hopefully will have some new ones this month.

I hope to have a site selection and firm date for our spring show by our next meeting. I encourage all of you to participate this year. The show is a lot of fun and gives us a chance to show this area we have some fine woodworkers. Don't forget the 2 X 4 part of our show this year. This should also be a fun project and will give you the chance to experiment without worrying about messing up some expensive wood.

Everyone should have name tags by the March meeting and please when you leave don't forget to put it back in the box!! Bring a friend to the next meeting and if you have something to show off bring it along.

Nelson

**NEXT MEETING**  
**March 9, 7:00 P.M.**

We are calling our March meeting Router Night. Fred Baker, the instructor of our evening classes will be heading this up. Fred will show us a few of his router jigs, a router table and plans that some of you made in his last class. Hopefully we'll have a couple of other people demonstrating their router or

jigs. A router is one of the most versatile tools a woodworker can buy and usually one of the first tools they buy, but unfortunately a lot of people don't use because they haven't been properly shown how it works or maybe they're somewhat frightened by them. So be sure to attend on March 9th and learn more about the router.

So far we have people bringing a Hitachi plunge router, Makita 3 H.P. plunge, Black & Decker, and Porter Cable. If you have a Elu, Bosch, Ryobi or other make please bring it to the March meeting. Also if you have a special router jig bring it along.

### OFFICERS MEETING

Officers and Board of Directors Meeting  
 6:30 p.m. before meeting.

### SPRING SHOW

We are still trying to find the best place to have our show. At press time we're still talking to a couple of places and trying to set a date that won't conflict with things they already have planned. We're still planning in May so get to making sawdust!

We will have 3 categories this year with ribbons awarded for 1st, 2nd, and 3rd place in each category.

1. Furniture/Large Pieces  
 Craftsman ..... Juried  
 Intermediate..... Juried  
 Novice ..... Not Juried

2. Turnings  
 Craftsman.....Juried  
 Intermediate .....Juried  
 Novice.....Not Juried
3. Accessories/small pieces  
 Craftsman.....Juried  
 Intermediate .....Juried  
 Novice.....Not Juried

We really want a lot of people to participate this year so start working on something now! As always if you want to enter the show and are at the craftsman or intermediate and don't want your pieces judged that is OK — they won't be. Also, plans are being made to give away some nice gifts this year but you have to enter to win!!

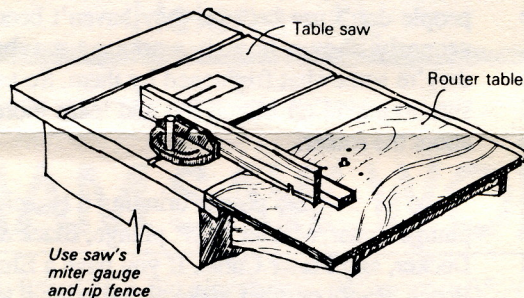
A somewhat new wrinkle is being added to the show this year. In addition to whatever project you undertake and enter in the show, as an added attraction and challenge, we are including a Two by Four Challenge. All who enter will be restricted to a piece of 2 X 4 X 8 pine (a stud) from which he or she is to make the most or best project they can. Glue, screws, nails, or any other fastening device may be used, but no other wood — just the 2 X 4. Refer to Fine Woodworking issue of March/April 1987, page 116 for a picture of what some others did with their piece of 2 X 4. There were straight back and hard bottom chairs, a bench, stools and a room divider. Let your imagination run wild and create a masterpiece. There will be a separate judging for this part of the show and separate awards. It is hoped many, or all, of you will participate in this unique challenge.

We appreciate Mr. Jan Purvis, Jr., sales representative for SAKURA, U.S.A., bringing and demonstrating their scrollsaw. Mr. Purvis, for instance, showed us how to make an inlay with the scrollsaw — you “stack” the pieces; that is, the piece which is to become the inlay piece is placed on top of the piece into which the inlay (the inlayor) is to be placed (held together with masking tape) and the cut-out (inlay) is cut at the same time as the place it is going to be placed in. If at this time you are solidly confused, join the crowd. All you have to do after completing the cut is remove the cutout in the bottom piece and insert the cutout from the top piece and you have a perfect fit. The saw may be used to cut wood, plastics, plexiglass and aluminum. There may be other applications but these were the ones mentioned. There is a tremendous source of patterns available for use on the scrollsaw — color books, comics, magazines, newspapers, etc. If the character can be followed on the scrollsaw, it is a pattern. Someone inquired about the round blades — those that are abraded on all sides and therefore cut in all directions. The speaker replied these blades are satisfactory but usually require considerable sanding. It was obvious from the interest shown by our members that this type of saw has a place in our shops.

Who else but the incomparable Dale Lewis brought another of his superb pieces. A coffee table made of mahogany and bloodwood. The design is original, as are all pieces made by Dale. It was interesting how the legs were inserted through a hole in the top thus creating a contrast of colors from the different woods. The “tray”, or undersurface, was a solid piece and was morticed into the legs. A most lovely table, Dale.

By mounting a router table to the side of the table saw as shown, you can combine the control of the saw's miter gauge and rip fence with the safe, crisp cuts of the router. You'll find the saw's miter gauge useful in cutting cross-grain dados, dovetails and finger joints. Cut mortises, tenons and with-grain grooves using the saw's rip fence. The combination saves shop space and increases the surface area of your table saw. There's no need ever to remove the router table—just lower the bit when not in use.

—Mark Duginske, Wausau, Wis



Alabama Woodworkers Guild Newsletter is published monthly for its members and other interested parties. Guild meetings are held monthly on the second Thursday at 7:00 P.M. at Acton Moulding & Supply Co. Information concerning the Guild may be secured by writing P.O. Box 506, Helena, Al 35080 or calling the Editor, Leonard Sanders, at 822-6876.

#### RUDE OSOLNIK

We are sure many of you remember we were privileged to have Rude put on an all day lathe demonstration in December. We were sorry to learn he was involved in an auto accident recently and was pretty well knocked around and, in fact, his truck was totaled. We wish Rude a speedy recovery.

Sorry to have to mention this again, but some have not paid their 1989 dues. Our dues are due and payable in January of each year, but we are extending the deadline to March 31, 1989 to accommodate those who intend to pay up, and would have already except they just forgot, because they don't want their membership to lapse. Dues that aren't paid by March 31st will cause that member to be dropped from the mailing list and he will not be included in the forthcoming new membership book.



#### Complete Cabinet Hardware Supply

- ABRASIVES
- CABINET HARDWARE
- DECORATIVE WOOD MOULDINGS
- APPLIANCES
- COMMERCIAL HARDWARE
- GLUES
- LOCKS
- EXTENSIVE LINE OF WOODWORKING MACHINERY



3912 Second Avenue South  
BIRMINGHAM, ALABAMA 35222  
TELEPHONE 205-595-4655

#### ALABAMA LUMBER & SUPPLY CO.

4204 1st Avenue, South  
592-6331

Hardwood Lumber & Plywood  
Builders & Cabinet Hardware  
Ray & Ralph Zorn

## NEW YANKEE WORKSHOP

That is the name of a TV show that comes on at 3:30 each Saturday afternoon. Kerry McCalla announced this at the February meeting. The host of the show is the same fellow who hosted This Old House, if you remember that program. If you aren't too busy making sawdust at that time tune it in, and if you are too busy, record it on your VCR for later viewing. They can't give us too many shows to help us with our woodworking, but until they do we must take advantage of those that are available.

---

### DOOR PRIZE

The Editor isn't sure why, but there were two door prizes given away at the February meeting. The winners were Margaret West and N. J. Stringfellow, each of whom received a set of gluing clamps.

### BUY - SELL - SWAP - HIRE

We only have one item this month and it is a dandy. Harold Phillips has a motorized miter saw for sale — call him at 424-0819, or see him about it at the meeting.

### NEW CLASS STARTING

Our professor extraordinaire, Fred Baker, is starting a new class of woodworkers right away. The last class has graduated, and it is reported Harold Phillips had to do extra work to graduate. Check with Fred if you are interested, but this late the class may be full. As heretofore, the cost of the class is \$45 for members and \$60 for others.

## WHATCHAMACALLIT

It looks like this is the month to mention Harold Phillips. What do you suppose he brought to the meeting? A cloth, or material, ruffler. This device is going to revolutionize woodworking. You have this hickey that looks like the wringers on an old washing machine and is turned with a crank. When heated rods are inserted in the rollers, the rollers are heated, and when the cloth is cranked through the rollers, the curved ridges on the rollers squeeze and press ripples into the cloth. Nice going, Harold.

---

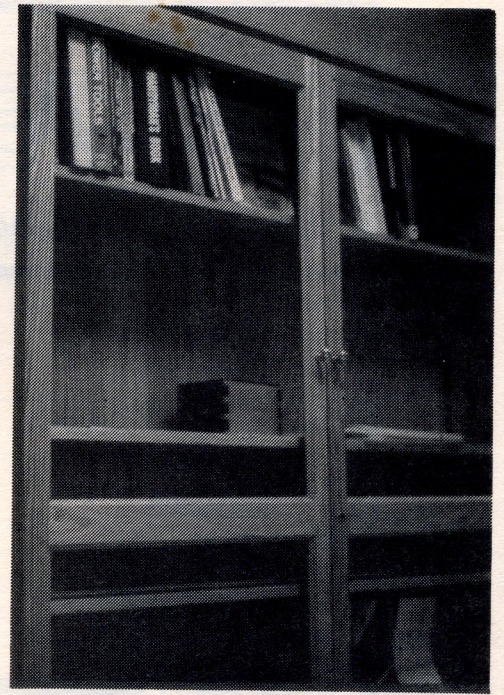
### WORK PARTY FOR BENCHES

Several members met on a recent Saturday to repair and renew our benches used for meetings. By the time you read this there will have been held another work party to complete the job. In addition to repairing the weakening joints, backs are being added in hopes it won't be quite so tiresome to sit for a couple of hours. If you know of anything else we should be doing to make our meetings more comfortable or better in any way, let the President know. He is always receptive to your suggestions.

---

### LIBRARY

You were informed at the February meeting the first of as many glass-doored book cabinets as it will take to house our books and periodicals. The Board voted to allocate money for new books, which will be done, but we expect many of you have books you would like to donate if you have finished with them. It is probably very few, if any, of the rest of us have been exposed to the same books you have. Then, if you don't have a book to donate but know of a book that would be beneficial to all of us, tell Frank Jones, Librarian (he is the one who brings that funny looking little stool to the meetings to sit on). Frank built the first cabinet which may be seen through the glass doors leading out of the former store and sales desk. We appreciate your dedication, Frank. President Brooks also plans to offer several of the woodworking magazine publishers the opportunity to donate a subscription to the Guild for inclusion in the library. Any suggestions you may have to make the library work for the Guild will be gratefully received.



### QUESTIONS AND ANSWERS

We are sending up a trial balloon on this one. We are interested in knowing whether or not you would like to have a column in the newsletter each month dealing with questions you want answered. For instance, suppose you would like to know why a joint failed, or a table top cracked, or a finish turned bad. Your questions would be submitted to someone who should know the answer, and his answer would be printed in the newsletter. This is nothing new, many of the woodworking magazines have such a section in their publications, but if enough interest is shown we will see what we can do.

### HARRIS MEEKS

You all know Harris — he is the one who demonstrated how to cane the bottom of a chair about a year ago. Well, he has been sick and unable to attend meetings, but hopes to be back soon. We would like to know about any of you who are ill so we may report it to the other members.

### ATLANTA WOODWORKING SHOW

Lakewood Fairgrounds at 2000 Lakewood Avenue (off Interstate 85) will be the site of the 1989 Atlanta Woodworking Show April 14-16th. There will be large exhibits of woodworking equipment, demonstrations of new tools and free educational workshops. Seminars by leading woodworking experts will also be available for an extra fee. Call 1-800-826-8257 for details and to receive a free brochure.

INJECTA  
**INCA**

Wood  
Working Machines

**HEGNER**  
Scroll Saws

*Makita*  
**POWER TOOLS**

**VEGA**  
Wood  
Working Machines

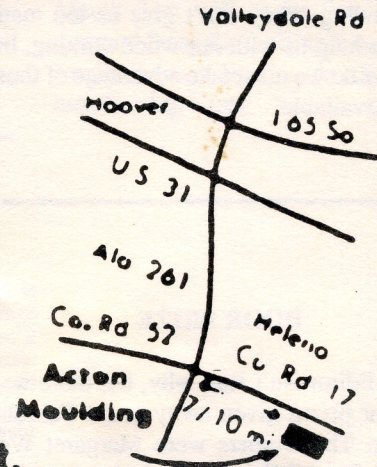
Record  
Marples  
Watco Stain  
Minwax  
Books  
DML  
Saw Blades  
Router Bits

**Mouldings**  
Stair Parts  
Hardwood Lumber  
Cabinet Plywood  
Hardware — Handtools

**Acton**

*Moulding & Supply*

6 to 4:30 M-F.—7:30-12 Sat.



County Road 17

Helena, Al.

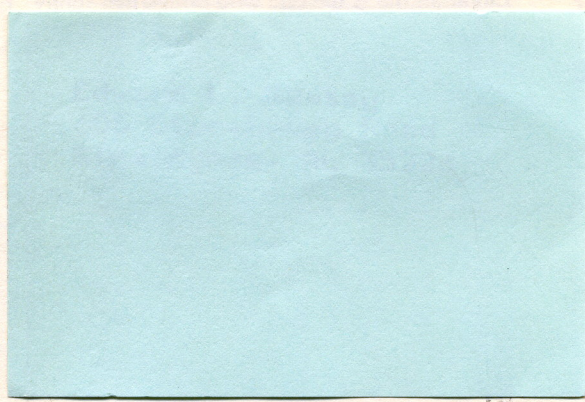
205-663-0130

# BIRMINGHAM SAW WORKS

P.O. Box 126 • Birmingham, Alabama 35201  
Call Us Toll Free 1-800-289-SAWS • Local 252-9757  
Since 1885



**The Alabama Woodworkers Guild**  
P. O. Box 506  
Helena, AL 35080



4RG