



# NEWSLETTER

VOLUME VII

NUMBER 4

APRIL 1989

## OFFICERS AND DIRECTORS

Nelson Brooks . . . . .	President	Jim Caldwell . . . . .	Board of Directors
Ron Acton . . . . .	1st Vice President	Ivan Kronberg . . . . .	Board of Directors
Frank Jones . . . . .	2nd Vice President	Dale Lewis . . . . .	Board of Directors
Walter Barnett . . . . .	Treasurer	Ben Neighbors . . . . .	Board of Directors
Kerry McCalla . . . . .	Secretary	Leonard Sanders . . . . .	Board of Directors
		Anita Skocik . . . . .	Board of Directors

## PRESIDENT'S MESSAGE

What a meeting we had last month. 92 people signed in making this our 2nd best attended meeting ever!! Thanks to those who brought your routers, tables and jigs to share, and many thanks to Fred Baker for heading this up. I know some of you thought we would go all night, and it was interesting enough we could have.

I have been talking to Century Plaza for two months trying to acquire space for our spring show in May, and everything seems to keep falling apart. The weekends for May are booked due to some previous summer bookings being moved up due to them starting a major renovation in June that will last for 8 to 9 months. So right now the plans are up in the air but we will have a show if we have to have it in Ronnie's parking lot!! I have talked to some other people and hopefully we can make plans by next meeting.

See you at the next meeting and keep bringing those show & tell pieces, also bring a friend.

Nelson

## NEXT PROGRAM - APRIL 13, 1989

How often have you wished you didn't cringe in horror at the thought of needing to make dovetails? Most of us have. Of course

there are several ways to make them - with a router, by hand, or with a band saw. We saw the router used last month when some blind dovetails were successfully made, and now we are going to be shown how to make them by hand and with a band saw. There are probably many of you who are proficient in this art, but one of us is exceptionally qualified to demonstrate the procedures for these two methods. Frank Jones, charter member and organizer of our Guild, Vice President of the Guild, Librarian, sitter upon a dilapidated stool at the meetings, has modestly agreed to share his knowledge and experience with us. So, if there is anything you don't know about making dovetails and you want to learn, now is your chance. Bone up on the subject and come prepared to try and stump the expert. We appreciate Frank doing this for us.

## OFFICERS MEETING

Officers and Board of Directors Meeting  
6:30 p.m. before meeting.

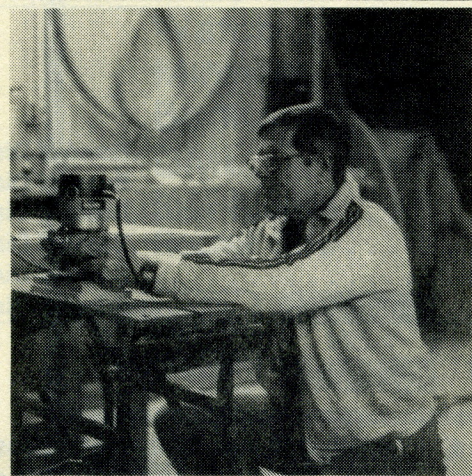
## LAST MONTH'S PROGRAM - MARCH

If you were there, or if not but read last month's newsletter, you know we received a treat instead of a treatment by Le Professeur, Fred Baker and some of his delinquents

(students) on many of the applications of the router. It seems the applications are endless and constrained only by one's imagination. Not wanting to be partial in selection of routers, Fred displayed and used Miller Falls, Sears, Elu, Makita, Black & Decker, Porter Cable and Hitachi. Fred started the program with an introduction to basic uses and safety precautions that should be observed in using a router. Fred then demonstrated a raised panel jig (it should be remembered Fred is the all-time champion jig maker) and made it look easy. He then called on several of his students (in our Guild class) to show what they have learned, or as a result of learning have devised, in the use of a router. In the order of their appearance: Micky Roy, mortising jig; Frank Ryerson, a router table with provision for dust and chip vacuuming; Harold Phillips, an oak drawer pull; Gene Benitz, use of round-over bit on drawer pull; Michael Key, half-blind dovetails; Harold Phillips, Sears router table and push sticks; Frank Jones, use of "bed roll" (a rubber mat on which a small piece may be routed without being clamped); Ben Landrum, personally constructed router table and how to make decorative shelves with cut-outs with the router; Bill Purson, who presented his new Elu router with explanation as to why he chose it. We appreciate these members preparing their presentations and trying to educate the rest of us. We suspect not many guilds have the wealth of talent we have in our guild and that is what makes us so unique in woodworking circles. Please see and enjoy pictures elsewhere in newsletter.

## MASTER FURNITURE MAKERS SHOW

The Dogwood Arts Festival Master Furniture Maker's Show in Knoxville, TN. will be April 21-23 at the Candy Factory, home of Knoxville Museum of Art. This show will showcase skilled furniture makers from around the southeast. So mark your calendar and if you're in the Knoxville area this will certainly be worth your time to go and see.



## KERRY'S ANTIQUES

What has become a tradition was gratefully received in March. Kerry has been sharing his fabulous collection with us for several years now, and hasn't repeated a single time. Maybe one time he will share with us just how extensive his collection is. His emphasis last month was in tools used generally in the making of musical instruments. Included were miniature planes, plane with hand (palm) pusher, instrument makers marking gauges, miniature joinery back saw, purfling cutter for inlaying, tuning hammer with built-in wrench (piano tuning), pipe flarer and crimper (for pipe organs), and several others that didn't get recorded. After each of Kerry's presentations we are aware there isn't much new under the sun because our ancestors did what they had to do to get the job done, and get it done they did. There is some beautiful and sophisticated furniture in this world that has survived for us to enjoy, and was made without the benefit of powered tools. It isn't difficult for us to appreciate Kerry's interest in antique tools. Thanks.

## DOOR PRIZE

It does seem that the people who need it the least always win our tool of the month as the door prize. Last month Harold Phillips won a fine set of drill depth stops which we are sure he will enjoy.

## NEW MEMBERS

It is a pleasure to announce a group of new members (hopefully none have been overlooked) as follows:

Angwin, Ben	Parker, John
Brown, Nelson	Ramus, Dean
Denson, William Q.	Sanders, Morris
Lee, Billy Joe	Vinson, M. W.
Martin, Bruce	Whitfield, Jesse
McKinnon, Joseph	Williams, Wallace
Murrie, Gary	Wood, Leon

LET'S SEE - THAT'S ABOUT RIGHT

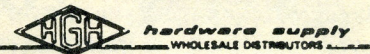


SEE THAT? IT WORKS EVERY TIME.

## SHOW AND TELL

What began a year or so ago has become an interesting part of our meetings. Our members are requested and encouraged to bring some of their work for the rest of us to see and enjoy. Don Bennett has been bringing his work for a long time (he is a charter member) and last month brought one of his specialties, a clock made of cherry and adorned with stirrups; Dale (the expert) Lewis had some of his beautifully crafted turned **bowls**; Leonard Sanders had a walnut music **directors** stand, and Bill West proudly showed us his mahogany pot (bowl) complete with lid.

Alabama Woodworkers Guild Newsletter is published monthly for its members and other interested parties. Guild meetings are held monthly on the second Thursday at 7:00 P.M. at Acton Moulding & Supply Co. Information concerning the Guild may be secured by writing P.O. Box 506, Helena, Al 35080 or calling the Editor, Leonard Sanders, at 822-6876.



## Complete Cabinet Hardware Supply

- ABRASIVES
- CABINET HARDWARE
- DECORATIVE WOOD MOULDINGS
- APPLIANCES
- COMMERCIAL HARDWARE
- GLUES
- LOCKS
- EXTENSIVE LINE OF WOODWORKING MACHINERY



3912 Second Avenue South  
BIRMINGHAM, ALABAMA 35222  
TELEPHONE 205-595-4655

## ALABAMA LUMBER & SUPPLY CO.

4204 1st Avenue, South  
592-6331

Hardwood Lumber & Plywood  
Builders & Cabinet Hardware  
Ray & Ralph Zorn

## THE SHOW

This will be an attempt to editorialize a little in an effort to convince you to participate in our annual spring show. These shows have been a source of inspiration to those who have participated in the past. There is nothing quite like having strangers Ooh and Aah over something you have made. Confess now, you may be modest and don't relish a lot of adoration, but deep down inside you appreciate compliments on your work. As we continue to practice our art we become more proficient and the quality of our work improves with each new project. By having our spring show we are making it possible for us to continue to grow and expand our knowledge and skills, for each time we display our pieces we grow a little more. As of this writing the place has not been confirmed, but you can rest assured it will be. It doesn't matter what you enter — whether it be large or small — whether it is an accessory such as bowls, candle sticks etc. — whether it is furniture — whether it is a toy — whether it is a jewelry box — no matter what it is, we welcome and want your piece entered. The show will be judged, but you don't have to submit your work to judging — there always are a number of members who don't — and you may want to enter several pieces, some for judging and some not. All we want you to do is enter something and get the satisfaction of having participated. We will know more about the Show place by meeting night. By the way, we have a considerable number of new members (new since last year's show) who are not familiar with our show. Ask any of the officers and directors, they can advise you as to procedures. But, whatever you do, get on the stick (board) and get your piece or pieces completed by show time.

---

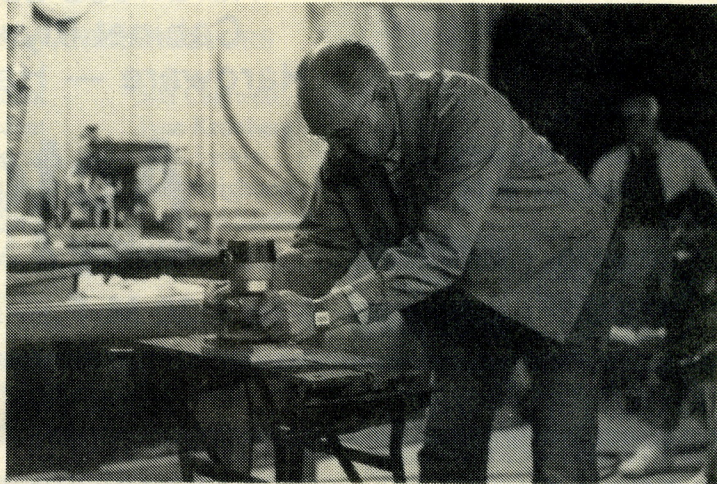
### ATLANTA WOODWORKING SHOW

Lakewood Fairground at 2000 Lakewood Avenue (off Interstate 85) will be the site of the 1989 Atlanta Woodworking Show April 14-16th. There will be large exhibits of woodworking equipment, demonstrations of new tools and free educational workshops. Seminars by leading woodworking experts will also be available for an extra fee. Call 1-800-826-8257 for details and to receive a free brochure.

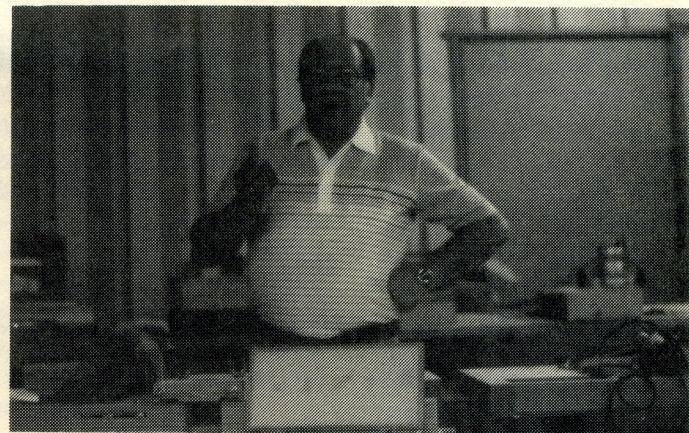
---



DON'T ARGUE WITH ME! I'M THE PRESIDENT.



GOSH, I HOPE THIS THING DOESN'T GET LOOSE



IT'S A LIE — I HAVEN'T GAINED A POUND



WHERE DID IT GO?

INJECTA  
**INCA**

Wood  
Working Machines

**HEGNER**  
Scroll Saws

*Makita*  
**POWER TOOLS**

**VEGA**  
Wood  
Working Machines

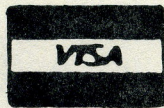
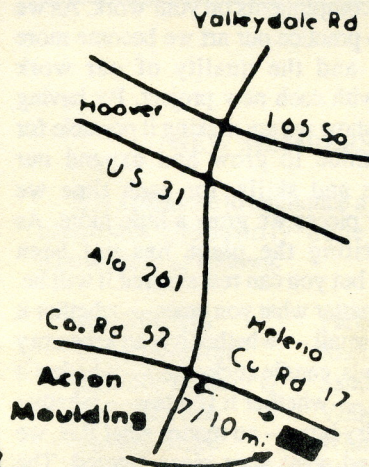
Record  
Marples  
Watco Stain  
Minwax  
Books  
DML  
Saw Blades  
Router Bits

**Mouldings**  
Stair Parts  
Hardwood Lumber  
Cabinet Plywood  
Hardware — Handtools

**Acton**

*Moulding & Supply*

6 to 4:30 M-F.—7:30-12 Sat.



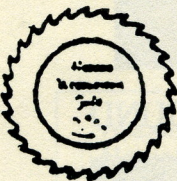
County Road 17

Helena, Al.

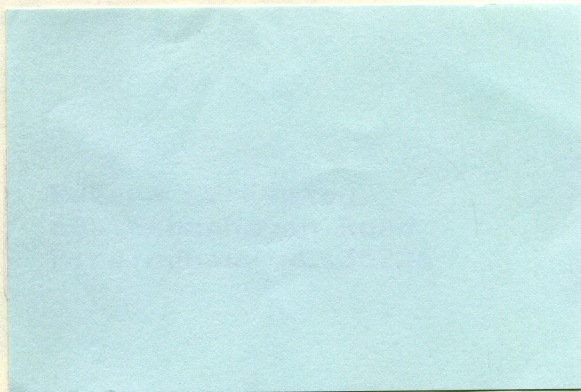
205-663-0130

# BIRMINGHAM SAW WORKS

P.O. Box 126 • Birmingham, Alabama 35201  
Call Us Toll Free 1-800-289-SAWS • Local 252-9757  
Since 1885



**The Alabama Woodworkers Guild**  
P. O. Box 506  
Helena, AL 35080



RG