

NEWSLETTER

VOLUME VIII

NUMBER 7

JULY 1990

OFFICERS

Jim Caldwell President
Gene Benitez Vice President
Kerry McCalla Secretary-Treasurer

DIRECTORS

Frank Jones
Mike Key
Dale Lewis
Ben Neighbors
Harold Phillips
Bill Purson

EX-OFFICIO DIRECTORS

Nelson Brooks
Spruce McRee
Leonard Sanders

PRESIDENT'S MESSAGE

Due to the absence of President Caldwell who is visiting his grandchildren (not his children, they don't count) in Japan there won't be a message in this space this month.

NEXT PROGRAM

JULY 12, 1990 • 7:00 p.m.

Gene Benitez has come up with a good one, again. Craig McClure, Manager of Porter-Cable in Birmingham, and Mike Franklin, Senior Service Technician with Porter-Cable will present a program on Maintenance of Power Tools in Home Workshops. Now, there is not a single one of you that doesn't need to know more about how to maintain your equipment, so come prepared to ask the experts what to do about whatever it is that needs attention on your tools.

LAST MEETING - JUNE 1990

In the absence of President Caldwell, we were subjected (no, that's not nice), we were pleased to have Kerry McCalla preside and carry off the meeting in his inimitable way. He made the usual and necessary remarks about the attendance and visitors and made an excellent summarization of the activities surrounding our recent Show. We were pleased also to have him include in his presentation his much acclaimed KERRY'S ANTIQUES feature. This month he brought several publications of antique tools he has come to rely on in acquiring his fabulous collection. The books he showed us were: Catalog of Early American Tools, History of

Woodworking Tools, Dictionary of Tools and several others that we did not get the names of. It certainly is a blessing to our Guild to have Kerry be an expert on antique tools and to enjoy his willingness to share his knowledge and tools with us. Thanks for both jobs, Kerry.

SHOW AND TELL

There was only one offering this month due principally to the recentness of the Show and very little going on with the members. The item shown is a carving of our logo. Bill Purson donated the mahogany for it, and Sterling Brewer carved it. It is about 12" wide and some 18" tall, and is carved of 3/4 lumber. We are grateful to Bill for the wood, and especially to Sterling for the tedious carving required to produce the piece.

YOU NEED TO KNOW

That 1) we now have in the library some written material on woodturning lathe work. This material is expertly done and when you see it you will understand why it is not identified further here. Ask Frank Jones to let you examine it and if it strikes your fancy you may check them out of the library; and that 2) we have a new name tag board made by Gene Benitez and Jerry DeVinney. It surely does beat scrounging around in that multi-pocketed file folder to find your tag. We appreciate both these new additions to our meetings.

TOYS FOR TOTS

Yep, you read it right — Ben Neighbors informed us that it is time to forget the Show and get on with our annual contribution to the Toys for Tots program. He has set a goal of ten (10, read it) toys each from us woodworkers and the way he said it we got the impression he wasn't going to take any answer but YES from us. With the reputation we have established and Ben's inspiring leadership there can be nothing but success again this year. If we start now, no doubt we could all make twenty (20, read it) each. Won't you give it a try?

JUNE 1990 PROGRAM

The fruits of our labors was presented as our regular program. The culmination of the evening classes from the Spring 1990 semester didn't come exactly as a surprise to us because we have come to expect good results from our classes. Fred Baker, Instructor of the General Woodworking class gave a summary of their activities and had on display the workbench the class had built. The plans of Tage Frid were used and the material used was mostly oak (Fred said there was some "popular" wood in it too) and the hardware was secured from Highland Hardware, in Atlanta. It is a highly functional bench and will be utilized by future classes (instead of having to wear Ronnie's out). They also made stools with dovetailed top to sides which were excellent. Fred wanted us to know he had four ladies in the class and hopes more of our ladies will sign up next time. Dale

Lewis, instructor of woodturning reported he had ten students in this class, and since they now have two lathes he can get more "hands on" type of instruction. The class made bowls, bowls with tops and segmented bowls in the bowl category. There were several fine bowls on display and, in addition, several well-turned weed pots. Ivan Kronberg, Instructor, and Jerry Vines, Co-Instructor, reported they had nine students. The products produced include chip carving (letters), shoes with shoe strings, salad fork and spoon and other interesting carvings. Ivan shared with us that an excellent instrument for carving is made from a straight razor. We hope by you having seen that our classes are seriously undertaken, and if you are lucky enough to get signed up in time to be included in the next class (this fall) you can't be anything but a winner.

THE SHOW - 1990

Ladies and gentlemen, we had a show. What a wonderful surprise to arrive at the South Central Bell Headquarters Building at 5:00 on Friday before the show began on Monday. The production of our members is always amazing. The only thing not stimulating was that everyone of you was not represented. If you remember, we have two classes of woodworkers — Intermediate and Advanced. Then broken down under each class are several categories of products. Last year, 1989, we added what is called "The People's Choice" to the show. A box is provided and the spectators (as well as our members) are asked to vote on the item they think is the best of show. There really wasn't much contest this year — the mahogany rocking (swinging) horse, made by Ed Ramsey, was The People's Choice, and a good choice too. Interestingly, the A.D.C. (Alabama Designer Craftsmen) were having their show at Samford University simultaneously with ours, and two of our members won ribbons in both shows, Dale

Alabama Woodworkers Guild Newsletter is published monthly for its members and other interested parties. Guild meetings are held monthly on the second Thursday at 7:00 P.M. at Acton Moulding & Supply Co. Information concerning the Guild may be secured by writing P.O. Box 506, Helena, Al 35080 or calling the Editor, Leonard Sanders, at 822-6876.

Lewis and Ed Sheriff. As an adjunct to our annual show, there are prizes for distribution to those participating in the show. We wish to express our appreciation to Acton Moulding and Supply, Birmingham Saw Works, Porter Cable and H.G.H. Hardware for their generous contributions. The Guild also gave four \$25 gift certificates to be used at Acton Moulding and four at Birmingham Saw Works. Wonderful prizes, and everyone got at least one, and some got two. We want to devote the rest of the newsletter to the Show and express our appreciation to Charles Brown and Ben Neighbors for providing the pictures. Our Show was judged this year by Randy Cochranne who undertook the arduous task at 1:00 p.m. on Saturday and didn't finish until almost 5:00.

ALABAMA WOODWORKERS GUILD

1990 JURIED SHOW RIBBON WINNERS

Traditional Furniture - Intermediate

1. Leon Anderson - Foot Rocker
2. Roy Bates - Round Walnut Table with Leaf
3. Cliff Saxon - Blanket Bench

Traditional Furniture - Advanced

1. Frank Jones - Bed Side Tables
2. Harry Reach - Shaker Bread Maker's Table
3. Harry Reach - Shaker Long Bench

Contemporary Furniture - Advanced

1. Kerry A. McCalla - Modular Wall Unit
2. Dale Lewis - "Frankie" Chair
3. Leonard Sanders - Typewriter Desk

Small Objects - Intermediate

1. Frank Ryerson - Cherry Lap Desk
2. Leon Anderson - Walnut Jewelry Box
3. Jack Perry - Shaker Boxes

Small Objects - Advanced

1. Ed Sheriff - Music Box - Oriental Style
2. Frank Jones - Spice Cabinet
3. Bill Purson - Post Office Box Bank

Wood Carving - Intermediate

1. Jerry Vines - Buffel Head Duck
2. Gene Benitez - Old Shoe
3. Gene Benitez - Mountain Man

Wood Carving - Advanced

1. Sterling Brewer - "Prospectors Friend"
2. Sterling Brewer - "Roll Out the Barrel"
3. Ivan Kronberg - Hunter and Dogs Scene

Wood Turning - Intermediate

1. Roy Bates - Elm Bowl
2. Roy Bates - Cherry Bowl
3. Cliff Saxon - Walnut Covered Bowl

Wood Turning - Advanced

1. Ivan Kronberg - Red Maple Plate
2. Dale Lewis - "Ivanhoe" turned box with lid
3. Jim Caldwell - Walnut Bowl

Toys - Intermediate

1. Roy Bates - Wooden Auto - Sedan

Toys - Advanced

1. Ed Ramsey - English Rocking Horse
2. Jim Caldwell - Tyrannosaurus Rex
3. Jack Perry - Rocking Horse

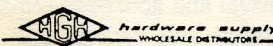
Honorable Mention

Charlie Brown - PT-17 Airplane Toy

ALABAMA LUMBER & SUPPLY CO.

4204 1st Avenue, South
592-6331

Hardwood Lumber & Plywood
Builders & Cabinet Hardware
Ray & Ralph Zorn

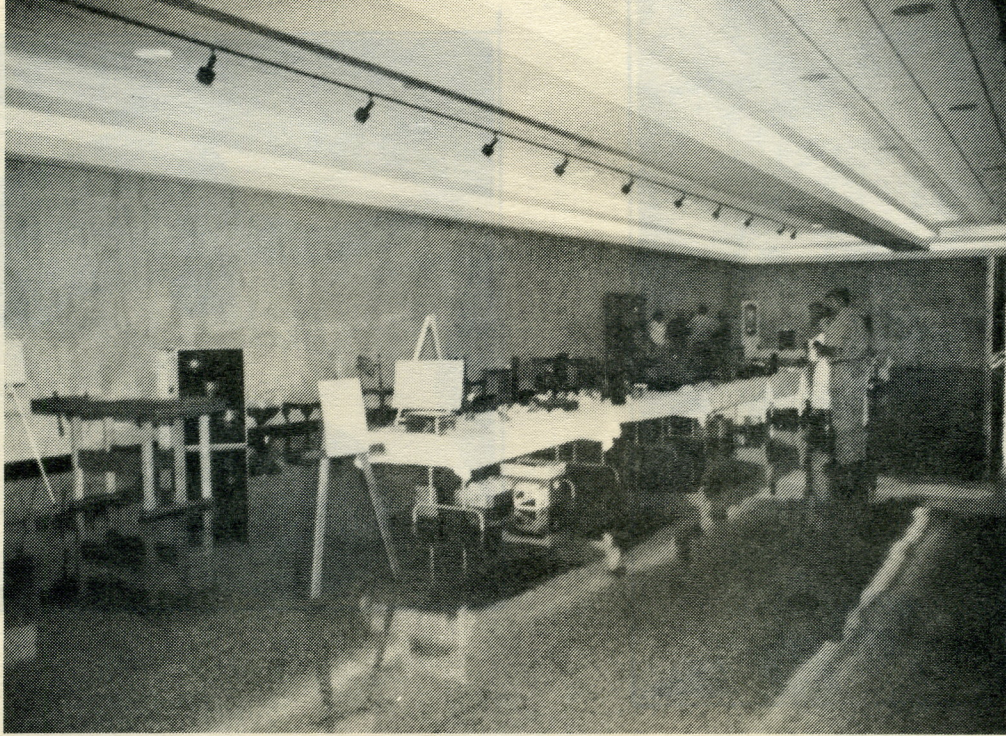


Complete Cabinet Hardware Supply

- ABRASIVES
- CABINET HARDWARE
- DECORATIVE WOOD MOULDINGS
- APPLIANCES
- COMMERCIAL HARDWARE
- GLUES
- LOCKS
- EXTENSIVE LINE OF WOODWORKING MACHINERY



3912 Second Avenue South
BIRMINGHAM, ALABAMA 35222
TELEPHONE 205-595-4655



The Show 1990

