

NEWSLETTER

VOLUME XI NUMBER 9 SEPTEMBER 1993

OFFICERS

Fred Baker President
Ed Sheriff Vice President
Cliff Saxon Secretary-Treasurer

DIRECTORS

Frank Jones
Mike Key
Ben Neighbors
Harold Phillips
Mary Spanos

EX-OFFICIO DIRECTORS

Nelson Brooks
Jim Caldwell
Spruce McRee
Leonard Sanders

PRESIDENT'S MESSAGE

Thanks to Jim Barr, Richard Brewer, Ted Elrod, Stanley Jensen, Frank Jones, Dale Lewis, John Lord, Lucius McIntosh, Brian McMinn, Ben Neighbors, Ethel Owen, Ed Ramsey, Cliff Saxon, Ed Sheriff, Wallace Williams, Leon Anderson, Nelson Brooks, Jim Caldwell, Hugh Craig, Ivan Kronberg, Ben Landrum, Leonard Sanders, Jerry Vines, Jesse Whitfield and Frank Ryerson for submitting items for our Annual Show that has just concluded. Last year, twenty-four members participated and they entered fifty-seven pieces. This year twenty-six members participated and seventy pieces were entered. Thanks to the Annual Show committee — Ed Sheriff, Mary Spanos, Ben Landrum, Ed Ramsey, Wallace Williams and Mike Key. Everything ran like clockwork! In addition to our members that worked many hours to make everything a success, we also want to thank Ron Bates and the staff at Sloss Historic Furnaces for their assistance. Without their help, the committee's job would have been much more difficult.

The Annual Show judge, Dean Black of Springville, was impressed with the quality of work and overwhelmed by the quantity. Personally, I want to see even more members participate, and maybe next year we can have 100 items in our show.

Our last meeting was very enjoyable. Ben Landrum, Charles Brown and Ben Neighbors are excellent toymakers and they put on a very good presentation. The representatives from Children's Hospital

had some video from last year's Christmas Party and from Christmas Eve, when the toys were distributed. They left the tapes with Frank Jones, our librarian, and you can check it out of the library. They also left a list of their needs. If you didn't get one of these sheets, additional copies will be available at the next meeting.

The Alabama Woodworkers Guild thanks Folmar Architectural Millwork for all the "scrap" pieces that they donated to us for toymaking. These pieces are too short for them to use, however they are just the right size for many of the toys we make. Thanks to Mike Key for taking the time on a hot August afternoon to go to Montevallo, load all of this up and having it available for our last meeting.

Fred

NEXT PROGRAM SEPTEMBER 9, 1993 • 7:00 PM

Down through the years we have thrilled to the sight of some of his creations; we have stood (or sat) in awe of their perfectness; we have wished we could design an object from conception; we have wished we could accept commissions for thousands of dollars and fulfill the commission; in other words we have wished we could become a craftsman like DALE LEWIS. This month he is going to share with us some of his secrets. Through slides, demonstration and commentary he will explain balance, proportion, curves, etc. If you miss this meeting you will surely be the loser.

LAST PROGRAM — AUGUST 1993

Mr. Toys for Tots, Ben Neighbors, got us off to a good start for this year's program. To begin the program, two of our most prolific toy makers, Ben Landrum and Charles Brown, demonstrated some of their techniques and jigs they use in their work. Ben started off with a display of cars: an S-10 pickup truck (like the one he just bought); semi-trailer dump truck; dump truck and jeep. He says when he selects toys to make he sets up for at least ten of each and by use of jigs can mass produce each of them. He showed us some jigsaw puzzles from last year and a nice horse on wheels. Then there was a small car made from a single block of wood, shaped on a jigsaw, of which he made some three hundred last year. Thank you, Ben. Then came Charles Brown. He began his display with a set of Tom Walkers, or stilts as they are known to some of us, of which he has made around one hundred. The he had a hippo, elephant, horse, piggy bank, crayon holder, a Mercedes XL, airplanes (like he made some three hundred of a couple of years ago). He, too, usually sets up to make multiple parts of his toys by the use of jigs. Then he demonstrated how he makes his own dowels. He has a jig with holes in the side for three sizes of dowels. There is a router on top with a cove bit hanging down in the jig. He then puts a square dowel blank in his electric drill, inserts the blank in the appropriate hole spinning, turns on the router and begins to feed the blank into the jig past the router. Out the other side comes a dowel. If you need a dowel of the

same material as the piece you are working on, this is the way to get it without having to order by mail. Thank you, Charles. Then Ben Neighbors introduced Mr. Ron Mensinger of Children's Hospital. Mr. Mensinger thanked us for making them the recipient of a portion of our toys last year. He proceeded to show us three video tapes. We appreciate Ben Neighbors and Ron Acton for setting up two TV sets and VCR player so we could see the tapes. The first tape was made at our Guild meeting last year when we brought our toys for distribution. It was a good tape but most of us are not very photogenic. The second tape was made at our Christmas party at which the remaining toys were brought. And the third tape, and the most touching of all, was made at the hospital last Christmas Eve when the bags of goodies were given to children who would not get to go home for Christmas. After seeing all of that our resolve is to make more and better toys this year. We also give some of our toys to the Helena Police Department and some to the U. S. Marine Corps. After the tapes Mr. Mensinger introduced Miss Suzanne Reaves with Children's Hospital. She repeated their appreciation for our toys and distributed to us a list of preferred toys and pieces for the hospital which is as follows:

Teenagers: Unpainted Picture Frames
Unpainted Cars
Unpainted Trucks
Unpainted Trains
 Jewelry Boxes

6 - 12 Yrs. Same as above for Teenagers

0 - 5 Yrs. Cars, Trucks, Trains, Boats

The reason some are designated as Unpainted is the hospital wants the

children to do the painting as part of their therapy. Arm and hand movement are important to some of the patients. Thanks, Ben Neighbors, for such a fine program.

IN MEMORIUM

We were saddened to learn of the death of one of our long time members CHARLES ALEXANDER. His membership goes back to the very beginning and we will miss him. He died July 31, 1993.

SHOW AND TELL

Dale Lewis led us off with several small bowls made of Jamaica Dogwood, Australian Pine, Sapwood Mahogany, Indian Rosewood and Black Mangrove. Frank Jones showed us an exquisite wooden briefcase; Ivan Kronberg a red maple bowl; Ed Sheriff a ceiling light of Japanese design and made of Indian Rosewood and lined with plexiglass covered with rice paper; Jerry Vines a carving of a Man Hunter (a duck decked out in hunting clothing and with a shotgun under his arm — a Man Hunter); and Mike Key a bowl gouge he made of A-1 Steel with a cherry handle. Thanks to each of you.

DOOR PRIZE

The usual procedure was followed after determining that we had all signed in and a number was selected between one and sixty- one, and the lucky winner was Frank Ryerson who got a \$15 gift certificate.

ACTON'S

We always appreciate the contribution Ron Acton makes to us by returning to us a percent of the proceeds from the sale of materials, tools and supplies we purchase from him. Thank you very much. While on the subject of Acton's he has a new product on the shelf. It is "ANTIQUOX" — three kinds of wax and a furniture cleaner. These products are imported from England. Check 'em out. We are pleased to report Mr. Bill Hallman has undergone by-pass surgery and is doing fine.

OUR WONDERFUL 1993 SHOW

Ladies and Gentlemen, we had a show this year. The pieces were brought in on Monday, August 16th, and the judging was done by Mr. Dean Black on Tuesday, the 17th. A reception was held at 5 p.m. on the 17th complete with wine, soft drinks and hors d'oeuvres (we had to look that one up to get it right). After we had seen all the entries, marveled at all of them, shared the joy of the ribbon winners, we adjourned to Ryan's Steak House for dinner. This year we had a total of 69 entries in the show. There were many remarks about how the quality of the entries exceeds any prior year and how we can be proud the public will get to see we are serious about our woodworking. The KUDZU FESTIVAL has been the scene of our show for a couple of years, and we appreciate the SLOSS FURNACE people for their interest in us and the advertising they gave us. Richard Brewer undertook to get us some publicity. It consisted of radio and TV spots and a really fine article and pictures in the Birmingham Post Herald. Many of us have had friends mention our Guild to us as a result of the publicity. By now you are interested in who the winners are, so here they are:

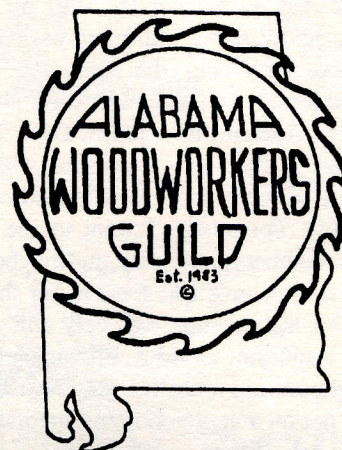
Traditional Furniture - Advanced


1. Artisan's Bench (workbench) - Ed Sheriff
2. Dresser - John Lord
3. Hepplewhite cabinet - Frank Jones

Traditional Furniture - Intermediate

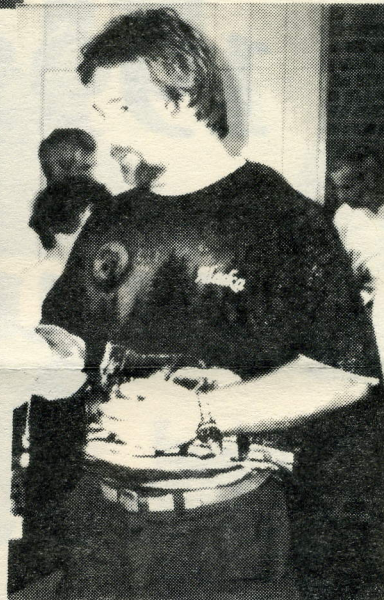
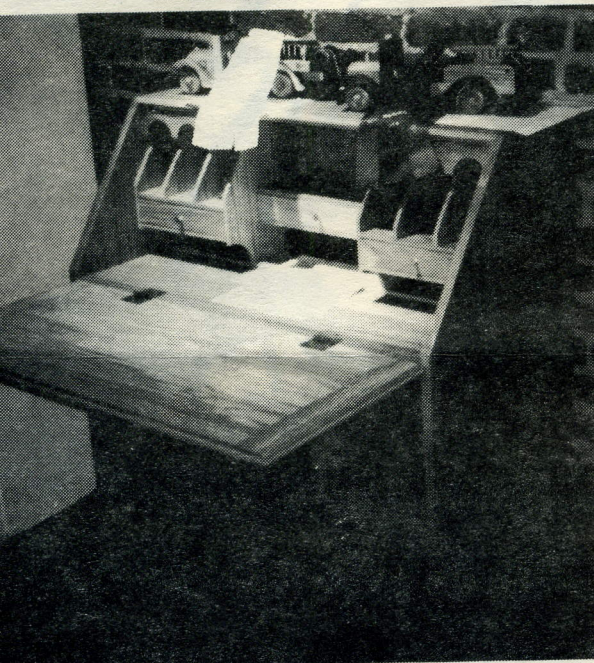
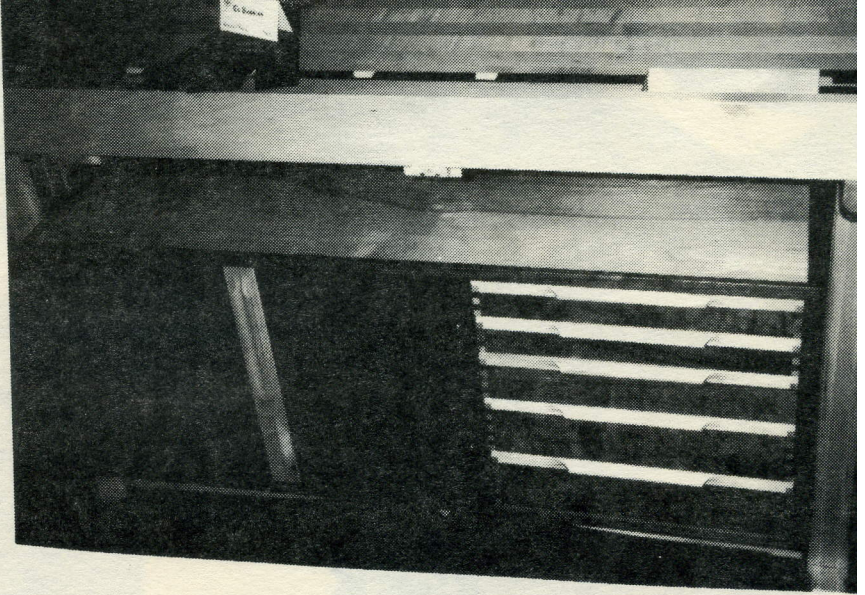
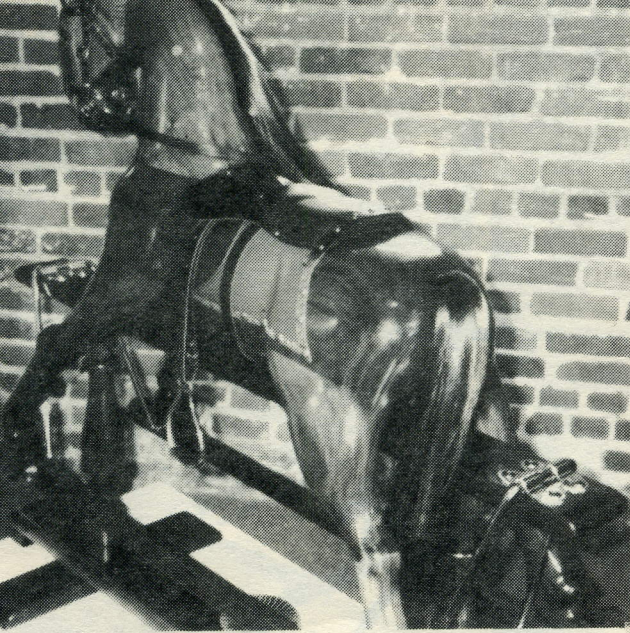
1. Queen Anne footstool - Ted Elrod
2. Dining Table - Cliff Saxon
3. Shaker style wall clock - Frank Ryerson

Alabama Woodworkers Guild Newsletter is published monthly for its members and other interested parties. Guild meetings are held monthly on the second Thursday at 7:00 P.M. at Acton Moulding & Supply Co. Information concerning the Guild may be secured by writing P.O. Box 506, Helena, Al 35080 or calling the Editor, Leonard Sanders, at 822-6876.

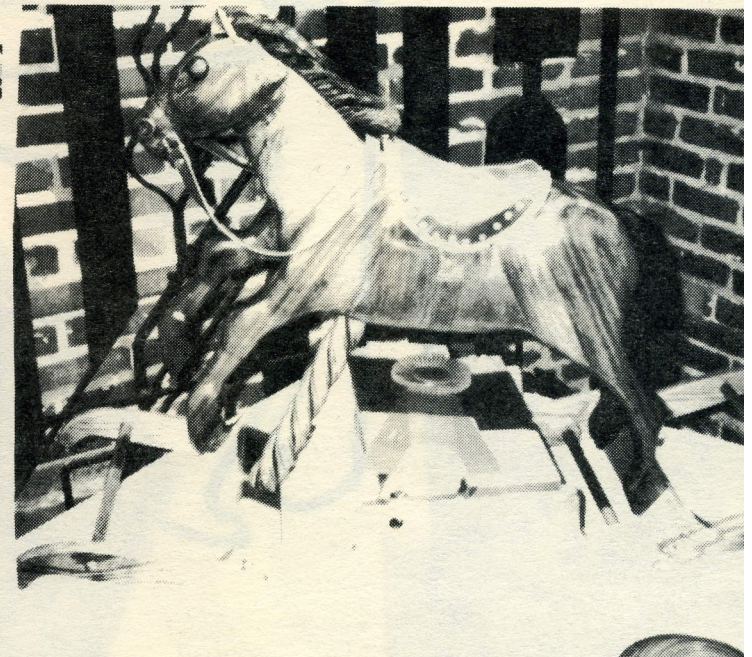
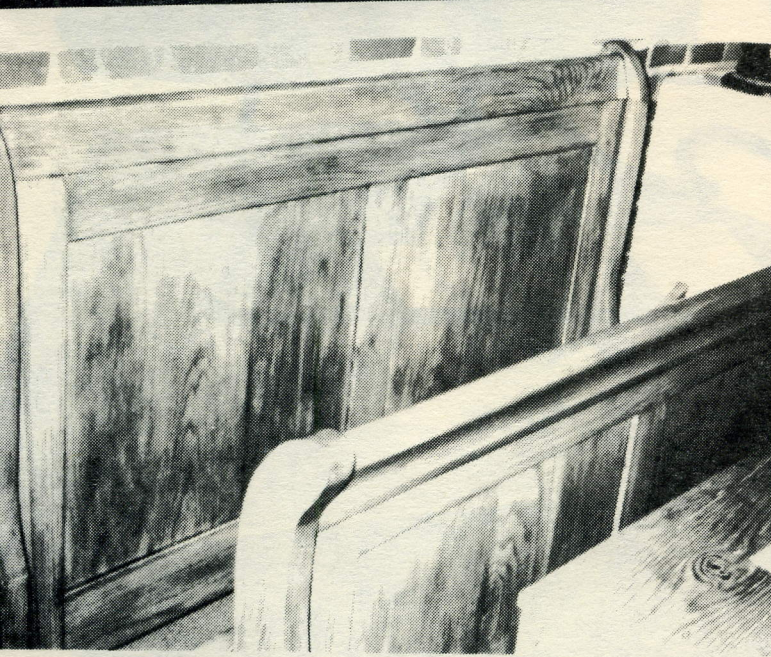
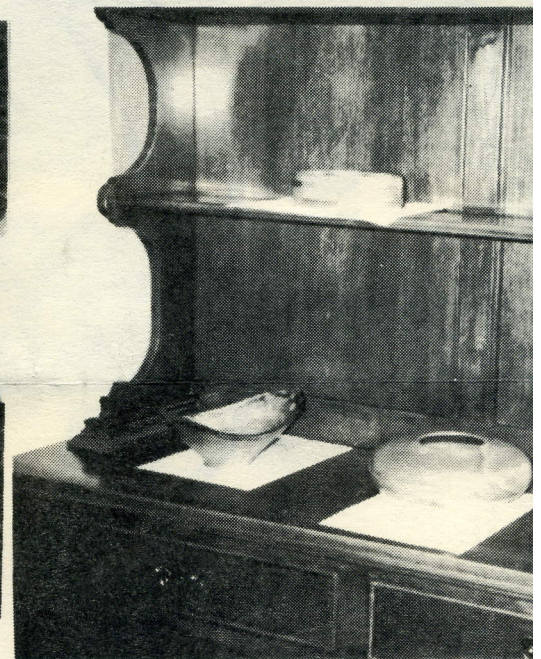


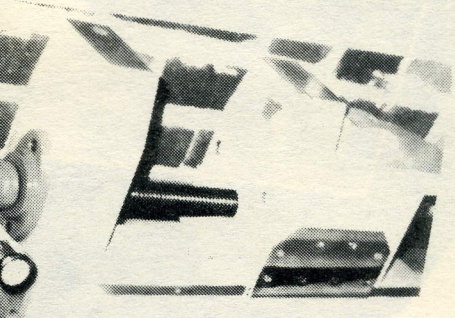
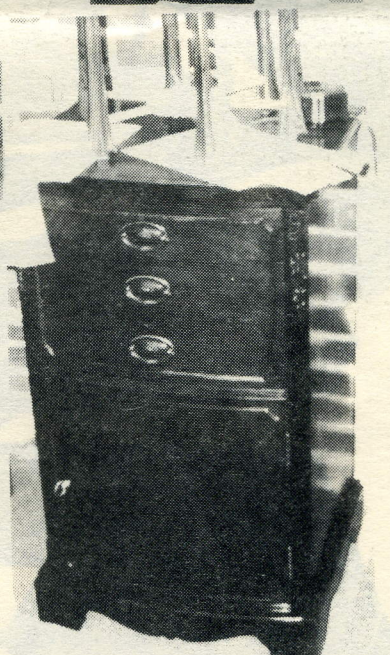
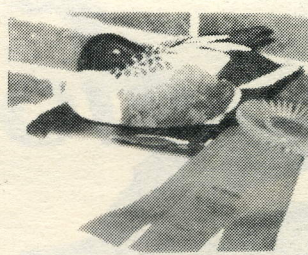
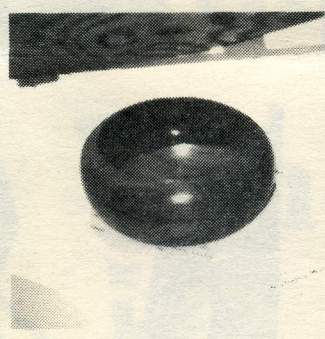
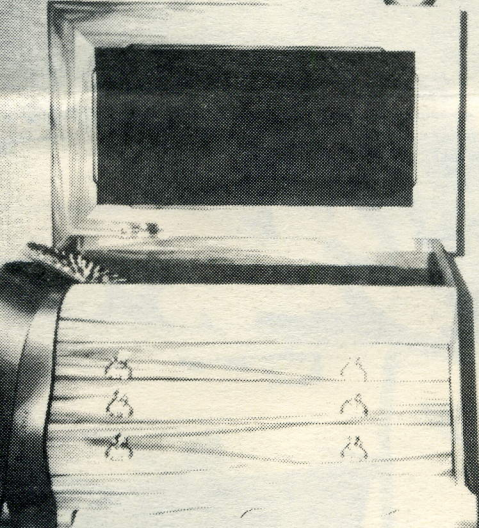
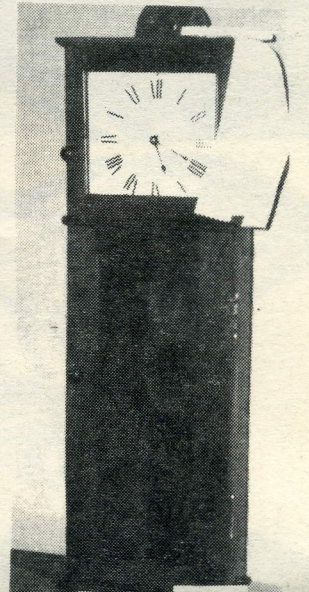
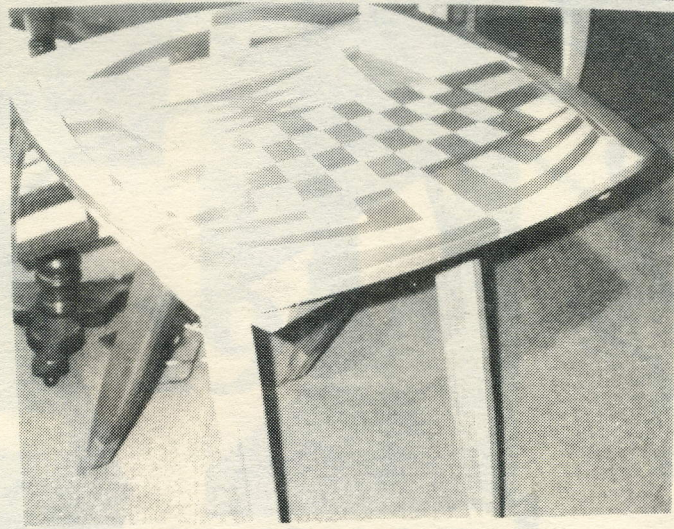
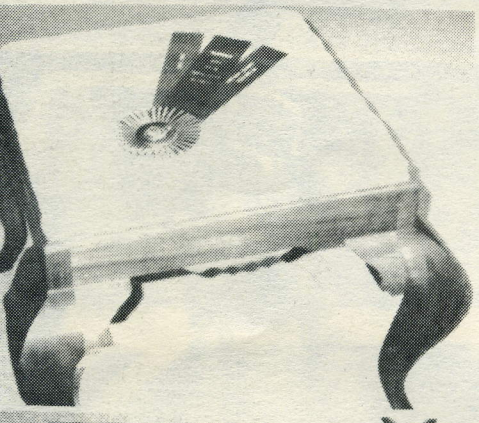
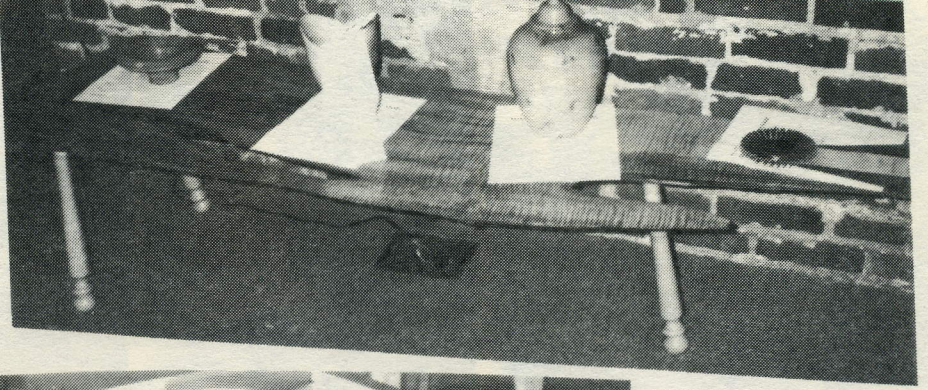
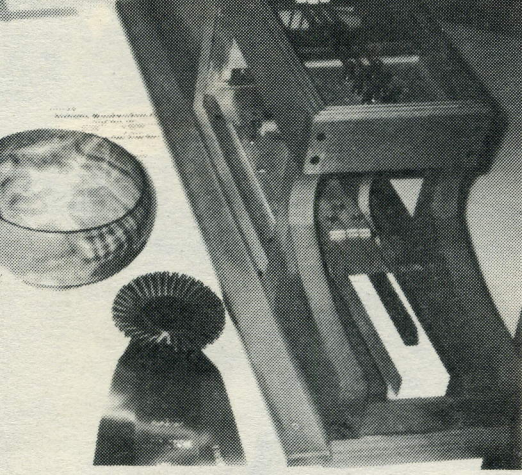


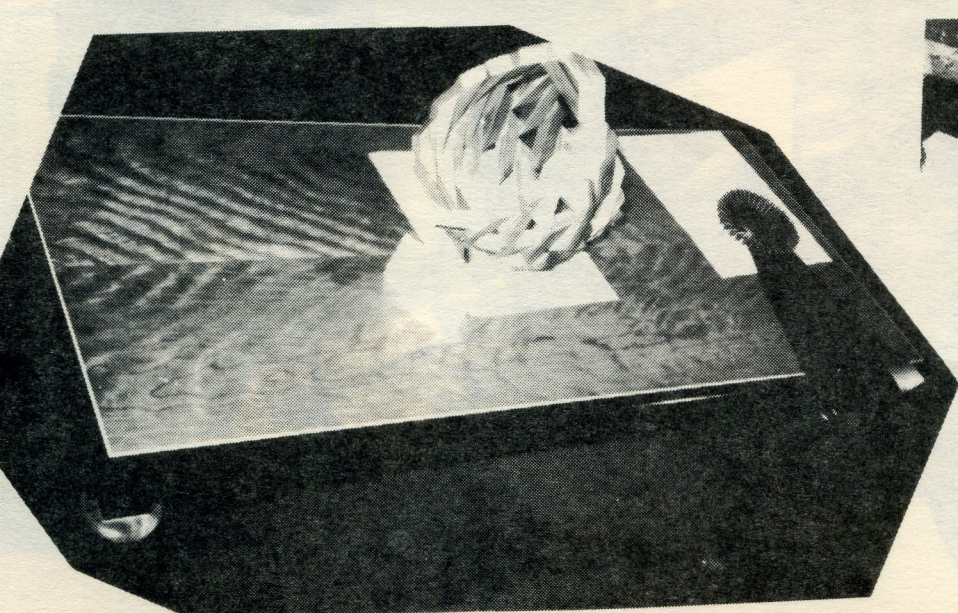
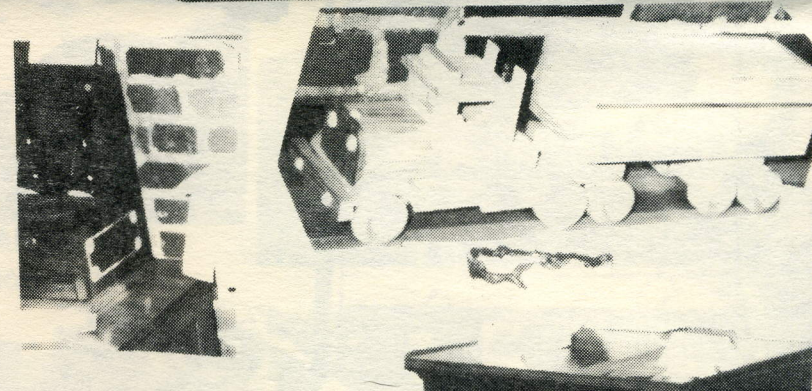
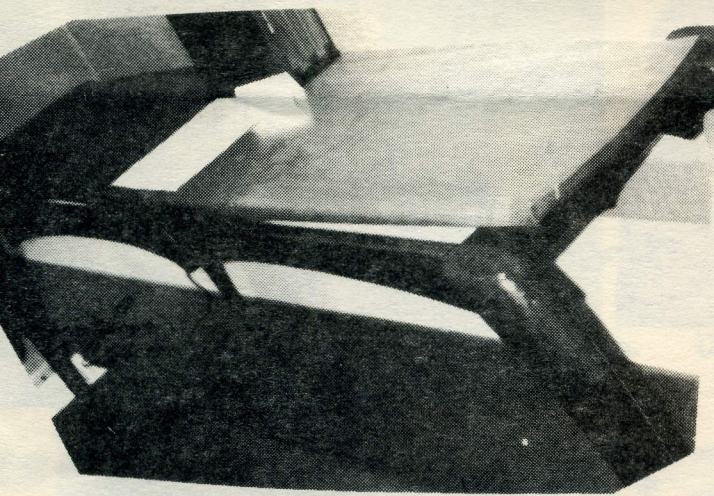
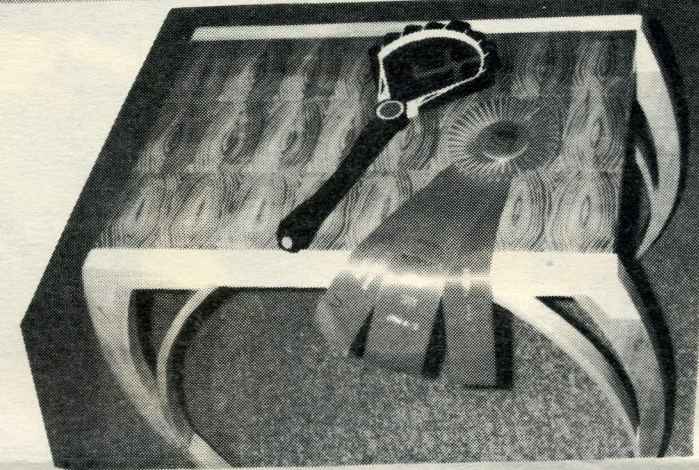
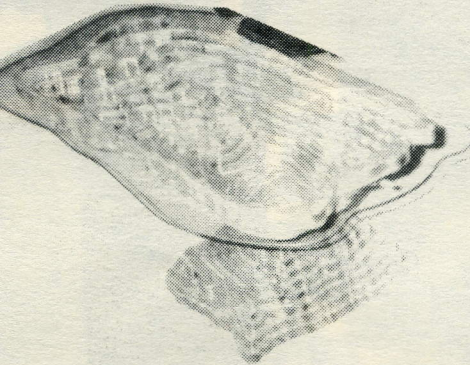
**1993
Annual
Show**



DEAN BLACK
Show Judge







**Contemporary Furniture -
Advanced**

1. "Soiree" Coffee Table - Richard Brewer
2. "Harlequin" End Table - Richard Brewer
3. Oriental Table Lamp - Ed Sheriff

**Contemporary Furniture -
Intermediate**

1. Coffee Table - Ethel Owen
2. Three Drawer Chest - John Lord
3. NO MORE ENTRIES

Carvings - Advanced

1. Song Bird - Jerry Vines
2. Duck Decoy - Jerry Vines
3. Duck Decoy - Jerry Vines

Carvings - Intermediate

NO ENTRIES

Small Objects - Advanced

1. "YOKO" (Jewelry Box) - Ed Sheriff
2. "Radiance" Hand Glass (mirror) - Richard Brewer
3. Band Sawed Boxes (2) - Ed Sheriff

Small Objects - Intermediate

1. Nantucket Lightship Basket - Ethel Owen
2. Sea Captain's Wine Locker - Leonard Sanders
3. Desk Set (pencil holder & paper weight) - Leon Anderson

Turnings - Advanced

1. Bowl -- Ivan Kronberg
2. Hollow Turnings - Jim Caldwell
3. Bowl (mahogany) - Dale Lewis

Turnings - Intermediate

1. Turned Urn - John Lord
2. Bowl (maple) - Jesse Whitfield
3. Bowl (maple) - Jesse Whitfield

Toys - Advanced

1. Rocking Horse - Ed Ramsey
2. Rocking Horse - Ben Neighbors
3. Fire Truck - Fred Baker

Toys - Intermediate

1. Fire Truck - Cliff Saxon
- NO MORE ENTRIES

You must know there is a tremendous amount of time and effort that goes into putting together a show like this. We are indebted to Ed Sheriff and his committee for all the multitude of details required for such an undertaking, and to Fred Baker who spent considerable time consulting with the SLOSS FURNACE people. There were others who worked on it, but they are too numerous to mention. Fred has the Judge's sheets and will be glad to give them to you upon request. We had a good show, Guild members, now let's start getting ready for next year's. Elsewhere in the Newsletter there is a collage of pictures made at the show.

ACTON **SERVISTAR**[®]

HARDWARE

Record
Marples
Watco Stain
Minwax
Books
Saw Blades
Router Blades
Electrical /
Plumbing Supplies

CUSTOM / STANDARD
MOULDINGS
STAIR PARTS
HARDWOOD LUMBER
CABINET PLYWOOD
HARDWARE — HANDTOOLS
(TRADE DISCOUNTS)

POWER TOOLS:
Makita
Porter Cable
Black & Decker
Bosch
Skil

Guild Nite Special!!

ELMER'S GLUE
\$10.95 a gallon



205-663-0130

1-800-228-0474

8 TO 6 M-F — 7 to 12 Sat.

The Alabama Woodworkers Guild
P. O. Box 506
Helena, AL 35080



928 North 28th Street Birmingham, AL 35203
P. O. Box 12264 Local (205) 328-4300
Bham, AL 35201 Call us Toll Free 1-800-289-SAWS

SAW WORKS

JOS. THUSTON AND SONS